

Daystate 

BLACKWOLF

MODULAR RIFLE SYSTEM

OFFICIAL HANDBOOK

SAFETY FIRST!

- ✗ **Never point your air rifle at anyone, nor at anything other than a legitimate target**
- ✗ **Never leave your air rifle unattended**
- ✗ **Never leave a projectile in the breech when storing your air rifle; remove the magazine when not shooting**
- ✓ Always check your air rifle is not loaded when you first pick it up
- ✓ Always treat your air rifle as if it were loaded, even if you know it is not
- ✓ Always use a safe, large backstop to catch your projectiles - and pay due attention to what is behind the target should you miss
- ✓ Always store your air rifle and ammunition separately and securely so that no unauthorised person can access or use them
- ✓ Always apply the safety catch when reloading, moving or whenever the rifle is inactive

Know and abide by the air rifle laws applicable in your state or country

SAFETY FIRST!



Store your rifle securely when not in use

CONTENTS

SAFETY	2
GENERAL INFORMATION	4
BLACKWOLF RANGE	5
STOCK OPTIONS & ACCESSORIES	6
FILLING YOUR AIR RIFLE WITH COMPRESSED AIR	7
SAFETY CATCH	8
LOADING THE MULTI-SHOT MAGAZINE	8
FITTING A RIFLE SCOPE	9
AMMUNITION RECOMMENDATIONS	10
STOCK REMOVAL	11
BARREL REMOVAL	12
REGULATOR	13
HAMMER SPRING CHANGE	14
TRIGGER ADJUSTMENT	14
ADJUSTMENTS	15
RECOMMENDED MAINTENANCE	16
DIAGRAMS	17
THREE YEAR WARRANTY	19



INTRODUCTION

Congratulations on choosing a DAYSTATE Blackwolf Modular Rifle System air rifle. All DAYSTATE air rifles are made in the United Kingdom to the highest quality standards and hand-assembled with components manufactured using the very latest production methods. Before leaving the factory, each rifle has been tested for power and accuracy to ensure it is performing at its best. All DAYSTATE air rifles comply with the latest pre-charged pneumatic (PCP) safety and product-testing protocols. Use this handbook to help you get the best from it.

This information is correct at time of printing, for the latest updates, go to the on-line manual by scanning the QR code opposite or visit **www.DAYSTATE.com/handbooksguides**



Follow us on the web
www.DAYSTATE.com

Hard Air Community (DAYSTATE)
community.hardairmagazine.com/forums/daystate-airguns.16/

Follow us on social media
www.facebook.com/DAYSTATELtd

www.facebook.com/OfficialDAYSTATEOwnersClub

DAYSTATE Official Owners Club Group
www.facebook.com/groups/1158780927804916/

DAYSTATE & DAYSTATE Brocock Owners
www.facebook.com/groups/1259254708097403/

DAYSTATE Owners Group
www.facebook.com/groups/228193634187062/

DAYSTATE Owners Target & Shooting Group (No selling)
www.facebook.com/groups/DaystateOwnersGroup/

DAYSTATE Air Rifle Owners Group UK
www.facebook.com/groups/1299786026893637/

We can also be contacted directly at **office@daystate.com**.
Please allow at least 24 hours for a response.



BLACKWOLF MODULAR RIFLE SYSTEM

The Blackwolf is a modular design in multiple versions depending on the shooters needs.

BLACKWOLF



BLACKWOLF WALNUT



BLACKWOLF LAMINATE



BLACKWOLF TAC



STOCK OPTIONS



Blackwolf stock



Blackwolf walnut stock



Blackwolf Laminate stock



Blackwolf TAC stock

430mm (17") .177, .22 caliber standard UK 12 and high power export - for pellets

600mm (23") .177, .22, .25, .30 caliber high power export - for pellets

711mm (28") .177, .22, .25, .30 caliber high power export - for slug



Full barrel kit



Barrel with tensioner and probe



480cc or 580cc
Carbon-Wrapped bottle



200cc or 300cc Alloy Air Tube with
forend extension

Notes:

Maximum power levels and caliber availability will vary according to prevailing legislation in the territory supplied

The regulator pressure adjuster (see page 7) is not accessible to sub-12ft/lbs (UK) versions and the factory-set reg pressure on UK-spec models cannot be altered

All model configurations feature a power adjuster (see page 12)

FILLING YOUR AIR RIFLE WITH COMPRESSED AIR

Fill your Blackwolf with clean, compressed air to a maximum of 250 BAR pressure from a separate charging unit - either a scuba tank or manual pump - using an air line

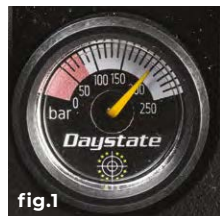


fig.1

(hose) connected with the supplied Foster-type female charging connector. The pressure of air in the buddy-bottle is shown by the gauge on the right side of the rifle, forward of the trigger (fig.1).

The needle on the gauge will move gradually after each shot to indicate the reducing air pressure in the buddy-bottle/air cylinder. You should monitor the position of this gauge to know when to refill your rifle.



fig.2

A regulator pressure gauge (marked with the HUMA-air logo) is on the left side of the rifle (fig.2). This gauge indicates the regulator's pressure. Refill your rifle before or when the pressure in the buddy-bottle air reservoir drops to the indicated regulator pressure.

1. Screw the supplied snap-on female charging connector to your hose assembly
2. Remove the magnetic dust cover (fig.3a) and firmly attach the snap-on connector to the rifle's inlet valve at the base of the action,



fig.3a

forward of the trigger guard. Ensure the connector's outer sleeve has locked and that the connection is secure (fig.3b)



fig.3b

3. Close the bleed screw on your charging unit
4. Slowly open the charging unit's main valve (if using a scuba tank/air bottle), or begin pumping (if using a manual pump), to allow air to transfer into the rifle's main buddy bottle or cylinder
5. Noting the gauge on your charging assembly, fill the rifle to its maximum pressure of 250 BAR

6. Once the required pressure has been reached, close the charging unit's filling valve and rapidly release the bleed valve to bleed off air in the air line

7. The snap-on connector can now be safely removed from the rifle (fig.4) and dust cover replaced.



fig.4

IMPORTANT

- **USE ONLY dry, clean compressed air of breathing quality**
- **DO NOT MODIFY any part of the filling assembly**
- **DO NOT LUBRICATE any internal parts of the filling assembly.**

SAFETY CATCH

Blackwolf is equipped with manually-operated ambidextrous safety catch located in the stock above the trigger blade. It should be engaged whenever the rifle is in the loaded and cocked state and only disengaged when you are ready to take the shot (pic.5 & 6).



Safety ON (SAFE) (horizontal)



Safety OFF (FIRE) (vertical)

LOADING THE MULTI-SHOT MAGAZINE

1. Apply the safety catch to ON (fig.5)
2. Pull the side lever all the way back (fig.7)



fig.7



fig.8



fig.9

3. Slide the magazine (if deployed) out of the breech (fig.8) (see Notes below)
4. Flip open the front loading gate on the magazine and fully rotate the inner drum one rotation clockwise (fig.9)
5. While holding the drum against spring tension. Turn the magazine to the horizontal and insert a projectile - nose

first - into the lower magazine chamber (fig.10)

6. Tension on the magazine drum can now be released and the magazine turned to vertical (fig.11)
7. Insert projectiles into the remaining chambers and then close the magazine loading gate (fig.12)
8. Insert the loaded magazine into the breech of the rifle with the flip cover side facing rearwards (fig.8)
9. Push the side lever all the way forward

THE RIFLE IS NOW LOADED

10. Disengage the safety catch by rotating to the OFF or FIRE position (fig.6)

THE RIFLE IS NOW READY TO FIRE

11. After the shot is taken, recycling the side lever will cock the rifle and allow the magazine to automatically index.



fig.10



fig.11



fig.12

The next projectile will be chambered on the lever's return. The magazine will index each time the side/lever is cycled. To avoid a double-loading two projectiles, do not recycle the side lever without having first fired the rifle.

The rifle can be dry-fired discharged with no projectile in the breech without mechanical damage occurring provided there is air in the rifle.

IMPORTANT

- ***Always keep the muzzle of your air rifle pointing in a safe direction***
- ***Always ensure the last shot has been fired from the barrel before finishing the shooting session, and then remove the magazine.***

FITTING A RIFLESCOPE



ATTACHING THE MOUNTS

DAYSTATE recommend the use of Blueprint Mounts with a 21mm Picatinny base fitting.

- Loosely fix mounts to each section the of the picatinny rail

ALIGNING THE CROSSHAIR In order to perfectly align the sight

- Place the rifle on a firm and level surface such as a sandbag rest or bipod
- Place a spirit level across the flat part of the breech block and adjust the rifle until it is level
- Look through the sight and, without moving the rifle, rotate the scope until the vertical crosshair aligns with a distant straight edge such as the side of a building or telegraph pole. Tighten all scope mount screws and double check vertical alignment.

TO ZERO THE RIFLE

- Set up a large paper target, with a safe and suitable backstop at close range such as 10-15 metres

- Fire three to five shots at this distance. Using the elevation and windage turrets on the scope, adjust until the centre of the crosshair and the projectile's point of impact coincides

Note: If the shot strikes lower than 125 mm (5 inches), then you will need to adjust the mounts or shim up the rear scope mount)*

- Now move the target to your chosen shooting distance (zero range) and fine-tune the scope in the same manner.

**DAYSTATE recommend the use of adjustable mounts, such as the Blueprint adjustable mounts shown.*

If this type of mount is not available, it is common to have to raise a scope by placing a shim in the rearmost mount, between the base of the rear cradle and the scope tube.

A shim should be no more than 0.3mm thick to avoid stressing the scope. Suitable material is old film negative, lead tape (used for weighing golf clubs) or aluminium foil folded to the required thickness.

PELLETS AND SLUGS

The power, accuracy, and consistency of your Blackwolf relies on the quality of the ammunition used. According to the specification of your Blackwolf model the following choices are recommended for best performance:

UP TO 12FT/LBS MUZZLE ENERGY & 12FT/LBS SET-UP & TEST PELLET

Rangemaster Sovereign*

.177 (8.44gr); .22 (15.9gr)

Rangemaster Sovereign Hunter

.177 (10.3gr); .22 (18.3gr)

Rangemaster Kaiser

.177 (8.64gr); .22 (14.66gr)

UP TO 30FT/LBS MUZZLE ENERGY

Rangemaster Sovereign Hunter

.177 (10.3gr); .22 (18.3gr)

Rangemaster King

.177 (13.42gr); .22 (25.38gr)

UP TO 40FT/LBS MUZZLE ENERGY

Rangemaster King

.177 (13.42gr); .22 (25.38gr); .25 (25.38gr)

Rangemaster Emperor

.177 (15.89gr)

OVER 40FT/LBS MUZZLE ENERGY

Rangemaster Emperor Lite

.30 (44.75gr)

Rangemaster Emperor

.22 (33.95gr); .25 (33.95gr); .30 (50.15gr)

Rangemaster Juggernaut (slug)

.22 (25.3gr); .25 (33.49gr)



*The factory set-up and test pellet for UK specification (12ft/lbs)



BLACKWOLF STOCK REMOVAL

Remove each of the two safety catches by removing the T10 TORX screw (fig.13) and then remove each of the catches and spacers (fig.14). The catches can be reversed with the short catch is intended for the trigger-finger side. A single or blanking catch can be fitted if required.



Remove the 10mm stock bolt forward of the trigger guard to lift the stock off the action (fig.15)



REMOVAL OF THE FOREND EXTENSION

With the stock removed, Unscrew the two T15 TORX screws in the under-rail panel of the main stock and lift out the forend extension. Fitting is the reverse procedure

BARREL AND CALIBER CHANGE

The Blackwolf incorporates an interchangeable barrel system to allow users to switched between calibers. Barrel assemblies (including corresponding breech probe) are available in 430mm (17"), 600mm (23") and 711mm (28") lengths. Spare magazines are also available. These can be purchased from your local DAYSTATE dealer or online at the performance center.

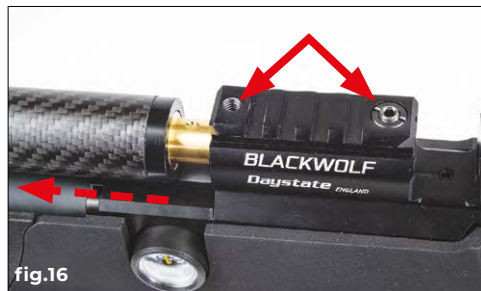
IMPORTANT:

Always ensure the rifle is unloaded (with no projectile in the barrel) and safe before changing caliber.

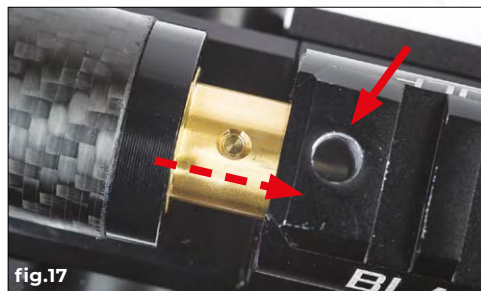


TO REMOVE THE BARREL

1. Loosen the two 3mm screws and gently slide the barrel assembly forward to fully extract it from the action (fig.16)



2. Barrel reassembly is the reverse of this procedure. Remove one of the screws to use as a spy hole to correctly align the barrel. Then replace and tighten both screws (fig.17). Note. Misalignment will result in lower power



3. When changing caliber, you will also need to swap the breech probe to one in the corresponding caliber

TO SWAP THE BREECH PROBE

1. With the barrel removed, open the side lever fully
2. Remove the 3mm hex bolt from the blanking plate
3. Use an allen key to push clear the blanking plate (fig.18)



4. Remove the 2.5mm allen screw from the breech probe (fig.19a & 19b) and pull free the cocking handle assembly



fig.19a



fig.19b

Extract the breech probe from the front of the action (fig.20). Tip: Tilting the rifle forwards will assist the breech probes removal

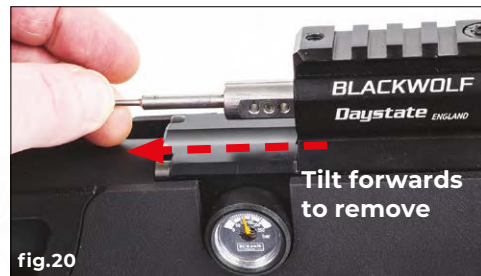


fig.20

5. Insert the new breech probe (of correct caliber) and reverse the procedures as above
- A barrel tensioning device is fitted inside the shroud to some models of the Blackwolf. This is not adjustable.

ADJUSTMENTS

To ensure the best possible shooting experience. Blackwolf incorporates many adjustable features that will enable you to customise your rifle's set-up to your exact needs.

POWER

The Blackwolf has an adjustable power wheel, allowing the user to set the output to best suit the projectile and shooting scenario without the need of tools. There are 20 settings in total.

Rotating the power adjustment wheel located at the rear of the breech block- from MIN, 1, 2, 3 ... through ... 17, 18, MAX will incrementally increase the power: the higher the number, the higher the power output (fig.21)



fig.21

According to model and/or region, your rifle will have been set up at the factory to attain maximum power output when the power adjustment wheel is set to 'MAX'. When the wheel is turned to 'MIN', the power output of the Blackwolf will be at its

lowest - typically around 60% of full power.

Notes:

- The amount by which the power output is changed by the wheel will vary according to the rifle's caliber and model specification; the biggest incremental differences are seen in the higher power and larger calibre models. You should experiment to find your preferred settings. A chronograph may be useful if you need to know the specific outputs of your rifle/projectile set-up
- The lower the power output, the greater the shots-per-charge capacity of the Blackwolf. Shot-count is also dependent on caliber and power configuration
- Adjusting the power wheel will affect the projectile's trajectory and, therefore your point of aim, particularly at longer ranges. You may need to re-zero your rifle when changing the power settings
- On higher power rifles, the regulator pressure may be used to vary the BLACKWOLF's power output. (See next section)

REGULATOR

All Blackwolf models are factory-equipped with an air regulator, the set pressure for which is shown on the HUMA-AIR gauge on the left side of the action (see page 4). This regulator is factory set for optimum performance in the supplied caliber and energy and should not normally need adjusting. For high powered models when perhaps changing to a different caliber, it may be necessary to adjust the regulator pressure. A list of recommended pressures for each energy/caliber can be found in our Workshop guides (daystate.com/support/workshop-guides) under Blackwolf

When the regulator is adjusted (fig.22), the regulator gauge will move to reflect the regulator's new set pressure.

To increase the regulator pressure, turn the screw counter-clockwise - this can be carried out with air in the rifle.



fig.22

IMPORTANT

To lower the regulator pressure, all air must be first removed from the rifle and regulator chamber. Then turn the screw clockwise.

Failure to do this will damage the regulator's seal, requiring specialist repair (not covered under warranty).

To remove the air from BLACKWOLF, use an extended 10mm socket to loosen the filler valve (fig.23a & 23b) allowing air to slowly escape. Once air stops coming out, the rifle should then be dry fired until no air can be heard discharging. Once air has been removed re-tighten the filler valve.



fig.23a



fig.23b



HAMMER SPRING CHANGE

Different grades of hammer spring are available for Blackwolf to allow more specialised tuning of high-power models for example during a caliber change. To change the hammer spring. Remove the action from the stock (page 12) locate and remove the two 3mm securing screws and remove the power wheel cap. This will be under mild tension. Remove the power wheel assembly and ease out the spring. Reverse the procedure to reassemble (fig.24).



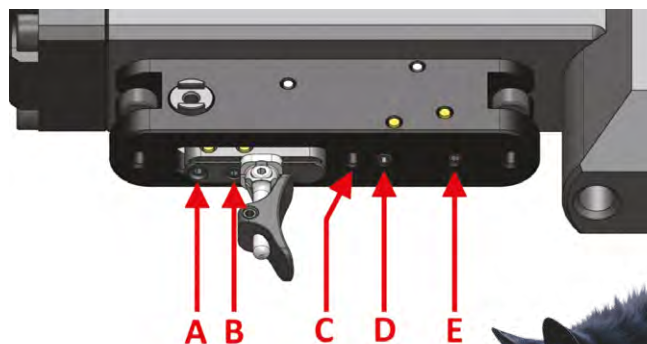
TRIGGER ADJUSTMENT

The Blackwolf is fitted with a unique 2-stage match trigger, set at the factory to be operationally safe and suitable for most shooters' needs. However, travel and weight can be fine tuned if required. Allen key size 1.5mm.

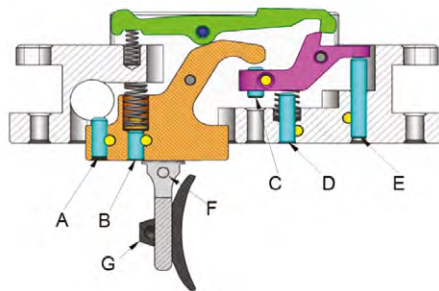
IMPORTANT:

Incorrect adjustment can make the rifle dangerous! Do not attempt adjust the trigger set-up if you do not feel confident in doing so; ideally use the services of an experienced gunsmith or DAYSTATE-approved service agent.

After making any adjustments, ensure the correct functioning of the safety catch.



- A. Safety reset
- B. First stage weight
- C. First stage travel
- D. Travel after shot
- E. Second stage travel
- F. Trigger post adjustment
- G. Trigger shoe adjustment





Cheekpiece and butt-pad

CHEEKPIECE

The cheekpiece can be lowered and raised by loosening/re-tightening the 5mm hex bolt (fig.25).



fig.25

BUTT-PAD

The butt-pad can be lowered and raised as required by unscrewing the central 5mm hex bolt and re-tightening it when the butt pad is in the desired position (fig.26).



fig.26

SIDE LEVER

The side lever is user-swappable allowing either right or left-hand cocking of Blackwolf. Change the orientation of the side lever as follows:

1. Remove the 2x3mm rear hex bolt (fig.27)



fig.27

2. From the cocking handle side push out the blanking plate (fig.28). **Caution** do not lose the bush

3. Remove the 2.5mm handle securing screw, visible with the blanking plate removed



fig.28

4. Replace the cocking linkage on the opposite side and replace all screws
5. Reverse the cocking handle.



CYLINDER/BOTTLE CHANGE

The air cylinder and bottle are interchangeable on Blackwolf once the air has been fully removed from the rifle. Full instructions are covered in our Workshop Guides published on the DAYSTATE web store.

daystate.com/support/workshop-guides

ACCESSORIES

A full range of accessories can be purchased for Blackwolf from our Performance center

daystate.com/performance-center/



SPARE PARTS

Are available from your local DAYSTATE dealer importer or directly from de state themselves.

RECOMMENDED MAINTENANCE

IMPORTANT: Pre-charged pneumatic air rifles work at extremely high air pressures and can be dangerous if not serviced correctly. There are no user-serviceable parts on the Blackwolf air rifle. Any regular servicing or repair work must be carried out by a DAYSTATE-approved servicing agent. DAYSTATE recommends that the rifle be returned to the factory, or agent, for routine maintenance every three years

Correct maintenance will ensure a long, trouble-free life. Routine and general maintenance can and should be carried out by the owner as follows:

AIR RESERVOIR

The Blackwolf can be supplied with an Alloy Air Cylinder or Carbon-wrapped buddy-bottle that will withstand pressures many times the working pressure of the air rifle. DAYSTATE advise that the air cylinder/buddy-bottle should be inspected every five years and replaced every 10 years starting from first use. Air Cylinders are marked with a start date and Buddy-bottles with a Final Date. These are manufacture dates and serve as a guide. As cylinders can be stored for some time before use, these are the minimum inspection and replacement dates

ACTION

To keep the rifle clean, a suitable gun cleaner or oil can be applied to a cloth and used to wipe over the outside of the gun

DO NOT allow oil to enter the inlet valve or other internal mechanical areas

BARREL

For target shooters the key to the best accuracy is a clean barrel. The type and softness of the ammunition will dictate how often the barrel will need cleaning, DAYSTATE recommend that the barrel on

your Blackwolf should be cleaned at least every 500 shots. Care should be taken when cleaning and only lightly oiled felt projectiles or a bore snake with a soft patch used. A wire brush should not be used on Blackwolf

LUBRICATION

Periodically, the breech probe and side lever pivots should be sparingly lubricated with light grease or oil

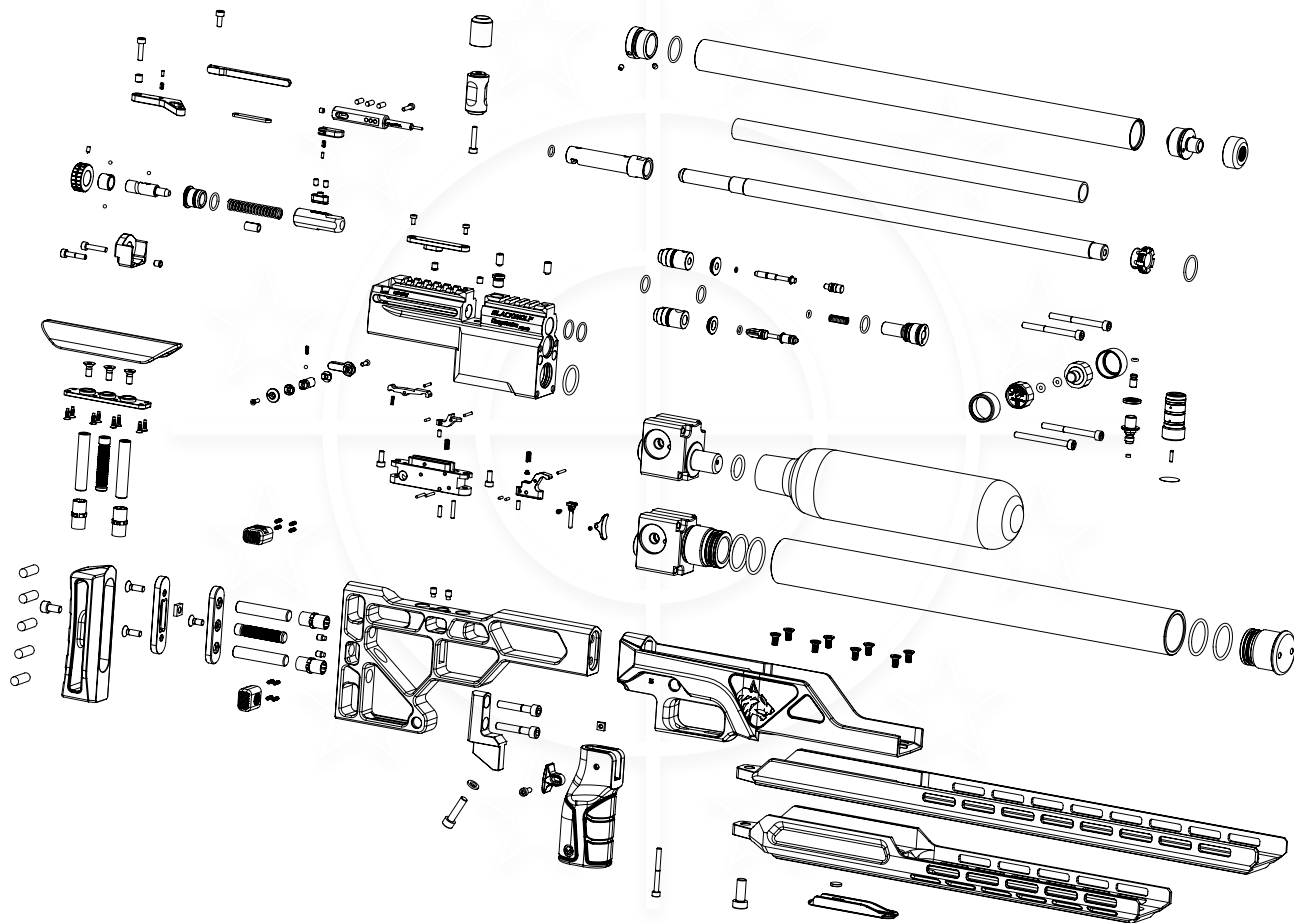
DO NOT lubricate any of the internal parts such as the firing valve or hammer assembly. The snap-on filling connector can be lubricated with a non-combustible grease. The connector can also be maintained by wiping over with oil or grease, but should be left 'dry'.

USE OF MANUAL (STIRRUP) PUMPS

This type of charger offers an inexpensive and convenient method of charging your rifle. If one is used regularly, care should be taken to avoid ambient moisture from inside the pump being transferred to the rifle's buddy-bottle/internals. Always refer to the pump manufacturer's operating instructions and, where possible use a 'dry pack' to extract ambient moisture content from the transferred air.

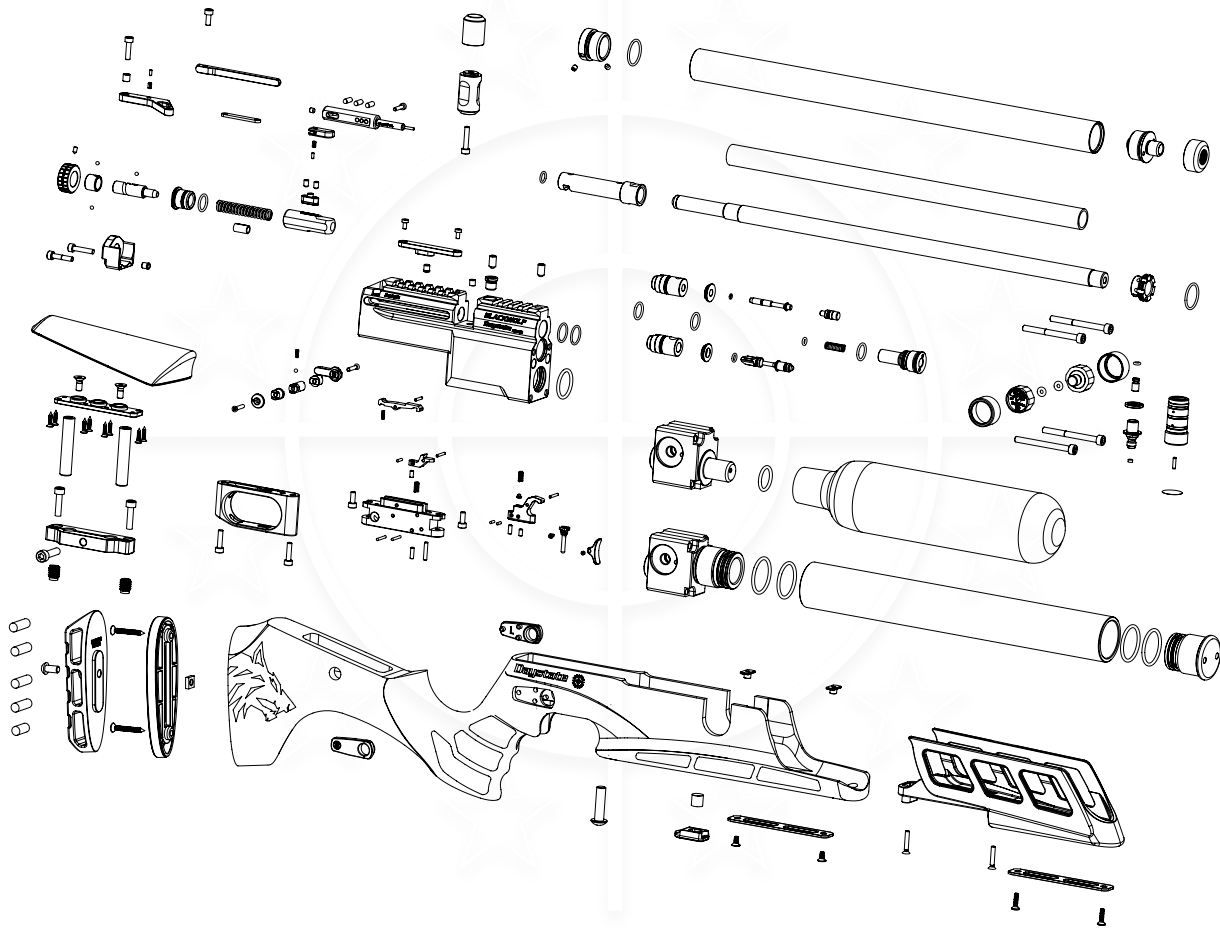
BLACKWOLF TACTICAL

Always quote serial number rifle type and caliber when ordering parts



BLACKWOLF STOCK

Always quote serial number rifle type and caliber when ordering parts



THREE YEAR WARRANTY

All new DAYSTATE rifles are guaranteed against faulty parts and labour for a period of three years from date of purchase (proof of purchase required). The warranty applies to the first purchaser of a new rifle and is not transferable to subsequent owners

After three years, it is recommended that the rifle be returned to DAYSTATE or its authorised agent for a service and subsequently every further three years. The air cylinder or buddy-bottle should be inspected every five years and replaced every 10 years.

DAYSTATE or its approved agent must carry out all maintenance and warranty work. Use and routine maintenance must have been carried out in line with this handbook

Should a rifle be returned or collected under warranty. DAYSTATE or its approved agent reserves the right to charge for postage and inspection costs. Servicing is charged at the prevailing rate

EXCLUDED FROM WARRANTY

Failure due to misuse or abuse; the fitting of non-standard parts; springs; seals; cosmetic damage; and fair wear and tear

GENERAL INFORMATION

More information, including the latest updates on servicing requirements and updates to this handbook can be found online at the official DAYSTATE website www.daystate.com

While every effort has been taken to ensure the accuracy of the information in this handbook. DAYSTATE or its agents cannot be held responsible for errors or omissions. Products are continually updated and specification may change without notice.

Scopes, mounts and accessories that may be shown throughout this handbook are optional extras, available from DAYSTATE and/or MTC Optics stockists.





Daystate 

Unit 3, Raleigh Hall Industrial Estate, Eccleshall,
Staffordshire ST21 6JL, United Kingdom

office@daystate.com

daystate.com

© Daystate Limited 2025. E&OE. 2025.v1