

*Daystate*



**HUNTSMAN | REVERE**

**OFFICIAL HANDBOOK**

[daystate.com](http://daystate.com)

# Contents

Shoot safely .....	2
General information .....	2
Filling your air rifle with compressed air .....	3
Cocking / loading – single shot mode: single-shot tray .....	4
Cocking / loading – multi-shot mode: self-indexing magazine .....	5
Pellet recommendations .....	6
Trigger – adjustment .....	7
Safety catch – operation and adjustment .....	7
Fitting a riflescope .....	8
Recommended maintenance .....	9
Exploded parts diagram .....	10
Warranty .....	11

## Safety First!

### **Never point your air rifle at anyone, nor at anything other than a legitimate target**

- ✗ Never leave your air rifle unattended
- ✗ Never leave a pellet in the breech when storing your air rifle; remove the magazine when not shooting
- ✓ Always check your air rifle is not loaded when you first pick it up
- ✓ Always treat your air rifle as if it were loaded, even if you know it is not
- ✓ Always use a safe, large backstop to catch your pellets - and pay due attention to what is behind the target should you miss
- ✓ Always store your air rifle and pellets separately and securely so that no unauthorised person can access or use them
- ✓ Always apply the safety catch when reloading, moving or whenever the rifle is inactive
- ✓ Know and abide by the air rifle laws applicable in your state or country

## General Information

### **Congratulations on choosing this fine Daystate Huntsman Revere air rifle.**

Your rifle has been hand-assembled using the finest materials available, from parts precision-made using CNC engineering technology. This rifle is the culmination of the company's involvement with precharged pneumatic (PCP) air rifles and uses knowledge gained from manufacturing this type of air rifle for over 40 years making your new Daystate one of the most accurate and reliable rifles available today. Use this handbook to help you get the very best from it.

This handbook is being constantly updated.  
For the latest information, bookmark this page here.  
<https://daystate.com/support/>

For further reading, technical help and to get involved with Daystate active online support teams, Daystate owners can now post across many groups on facebook:-

@daystateltd  
@Daystate Technical Support  
@Daystate Official Owners Club Group  
@Daystate Target and Shooting Group  
@Daystate Owners Group  
@Alpha & Delta Wolf Owners Group  
@Daystate MK3/MK4 Owners Club

We can also be contacted directly at  
[technical@daystate.com](mailto:technical@daystate.com).\*

\*Please allow a minimum of 24 hours for a response.



[daystate.com](http://daystate.com)

Daystate also has an active Owners' Club.  
This is free to join and can be found online at  
[facebook.com/OfficialDaystateOwnersClub](https://facebook.com/OfficialDaystateOwnersClub)





# Filling Your Air Rifle With Compressed Air

## **IMPORTANT: DO NOT USE any gas other than clean, dry compressed AIR**

Your Daystate PCP is filled with compressed air up to 250BAR pressure from a separate charging unit – either a scuba tank, manually operated stirrup pump or a high-pressure air compressor – using an air line [hose] connected with the supplied filler probe [fig.1]. To show the state of the air pressure, there are two gauges on the rifle – one for the rifle's main reservoir charge of air, and one for the regulator that releases a consistent amount of air for each shot.

The main reservoir air pressure gauge is situated under the muzzle [fig.2]. Its needle will gradually move after each shot to indicate the reducing air pressure in the main air reservoir. You should monitor the position of this gauge to know when to refill your rifle. When it falls below the fixed-pressure showing on the regulator's gauge (see below), the rifle must be refilled with compressed air.

The gauge located under the forestock, forward of the trigger guard [fig.3] indicates the fixed pressure of the Huma-Air regulator. This is independently set at the factory and does NOT move. [Note: The regulator gauge does NOT indicate the status of the rifle's main air reservoir pressure.]

## **FILLING PROCEDURE**

- To access the rifle's filling valve, rotate the collar at the end of the main air reservoir to reveal the filler port [fig.4]
- Having first checked the condition of the two O-rings on the filling probe [fig.1], insert the probe fully into the port [fig.5]
  - Begin filling the rifle's main air reservoir with compressed air from your chosen air supply source in line with the apparatus' instructions
- Note the pressure indicated by the main reservoir pressure gauge. You should fill the rifle to the maximum safe working pressure [SWP] shown on the disc on the right of the Revere's breech block. Typically, this is 250BAR [3,625psi] – [fig.6]
  - **IMPORTANT: Use ONLY clean, dry, compressed air**
  - **Do NOT charge the rifle more than the SWP**
- Once the correct pressure has been reached, turn off the charging unit [if applicable] and undo its bleed valve to rapidly bleed off the remaining air in the connector hose
- Remove the filling probe and rotate the collar to cover the filler port



[fig.1]



[fig.2]



[fig.3]



[fig.4]



[fig.5]



[fig.6]

# Cocking/Loading Your Rifle

The Huntsman Revere can be fired in single- or multi-shot modes; each loading method requires the rifle to initially be cocked by pulling back fully the sidelever [fig.7]. In single-shot mode, a loading tray is placed in the breech to facilitate hand-loading a pellet into the breech for each shot. Multi-shot mode uses Daystate's self-indexing magazine to automatically present pellets to the breech, and therefore allows quicker shooting.

## IMPORTANT:

- **To prevent damage to the rifled barrel, only use soft metal pellets**
- **Keep the muzzle of your air rifle pointing in a safe direction at all times**
- **Always ensure the last shot has been fired from the barrel before finishing the shooting session, especially when multi-shot mode has been deployed**

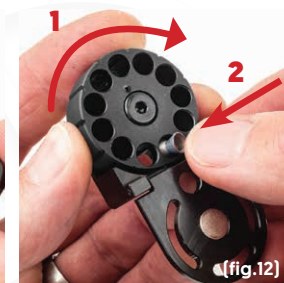
## SINGLE-SHOT MODE

- Engage the safety catch at the rear of the action by rotating anti-clockwise [see page 7]
- Cock the action by fully drawing back the sidelever [fig.7]
- If required, slide out the magazine and insert the single-shot tray into the breech block, with the locating pins to the rear [fig.8]. The tray uses magnets to hold it in place
- Check that the pellet is not deformed and using the tray's channel as a guide, manually seat the pellet, nose first, into the barrel [fig.9]
- Return the sidelever all the way forward to breech the pellet
- **THE RIFLE IS NOW COCKED AND LOADED**
- Disengage the safety catch [rotate clockwise – see page 7] and the rifle is ready to fire
  - Note: The rifle can be 'dry' fired – ie with no pellet in the breech – without any mechanical damage occurring providing there is air in the rifle



## MULTI-SHOT MODE

- Engage the safety catch at the rear of the action by rotating anti-clockwise [see page 7]
- Cock the action by fully drawing back the sidelever [fig.7]
- If necessary, lift out the single-shot tray
- **MAGAZINE REMOVAL AND LOADING**
  - Extract the magazine from the right side of the breech [fig.10]
  - Open the front loading gate of the magazine to expose the chambers of the inner drum [fig.11]
  - Rotate the inner drum clockwise until it stops and, while holding it against spring tension, insert a pellet, nose first, into the lowest chamber [fig.12]
  - Load the remaining empty chambers with pellets [nose first] [fig.13] and then close the gate. [Note: The magazine's capacity varies according to calibre]
- Slide the fully-loaded magazine back into the breech from the right side
- Return the sidelever to the fully closed position to 'chamber' the first pellet
- **THE RIFLE IS NOW COCKED AND LOADED**
- Disengage the safety catch [rotate clockwise – see page 7] and the rifle is ready to fire
- After the shot is taken, re-operating the sidelever will cock the rifle and allow the magazine to automatically index; the next pellet will be breeched on the lever's return
- Notes:
  - The magazine will index each time the sidelever is cycled. To avoid a 'double-load', do not re-cycle the sidelever without having first fired the rifle
  - You can remove and 'top-up' the magazine following the loading procedure above
  - Always fire off the last pellet that was loaded before removing the magazine
  - The rifle can be 'dry' fired – ie with no pellet in the breech – without any mechanical damage occurring providing there is air in the rifle.



# Pellet Recommendations

The power, accuracy and consistency of your Daystate air rifle relies on the quality of the pellets used, so inferior brands should be avoided. Additionally, the Daystate magazine has been specifically engineered to operate with waisted roundhead pellets. If other pellet shapes are used, it may not index properly and could possibly jam. Daystate recommends the following pellets across all calibres for the Huntsman Revere, in order of preference:

## Models up to 12ft/lbs energy rating:

Rangemaster Sovereign  
Rangemaster Kaiser

## Models up to 30ft/lbs energy rating:

Rangemaster Kaiser  
Rangemaster Sovereign  
Rangemaster Sovereign Hunter  
Rangemaster King

## Models up to 40ft/lbs energy rating:

Rangemaster King  
Rangemaster Emperor

Note: Due to the varying legal requirements applicable to air rifles in different countries, the Revere's maximum power output is market-specific. Where applicable, your rifle's muzzle energy has been set at the factory with sufficient safety margin to ensure any legal compliance with the recommended pellets.





# Trigger Adjustment

The Huntsman Revere is fitted with a two-stage trigger which has been set at the factory for a safe, crisp let-off. While you can adjust the trigger for personal preference (with a 1.5mm hex key), it is recommended that this is done in conjunction with a qualified gunsmith or Daystate agent. It is easier to make your trigger adjustment with the stock and trigger guard removed.

## First stage travel (fig.14)

The amount the trigger blade travels before stopping at the second-stage 'stop' point can be altered. Primarily, this is done via adjustment screw [D], but you will also need to counter-balance any adjustments with adjustment screw [A] to ensure the safe operation of the trigger. Turning screw [D] anti-clockwise increases the length of travel (and blade angle) of the first stage; clockwise decreases it. If adjusting screw [D] clockwise, turn adjustment screw [A] anti-clockwise; and vice-versa.

**Important – After carrying out first-stage trigger adjustment, it will be necessary to adjust bolt [E] to ensure correct operation of the safety catch**

## Second stage (pull) adjustment (fig. 14)

The feel of the trigger's break-point (the second stage) can be altered to suit personal preference by removing locking grub screw [B] to reveal adjustment screw [C]. To increase sear engagement (making the trigger pull feel heavier), turn adjustment screw [C] anti-clockwise. To reduce sear engagement, turn adjustment screw [C] clockwise.

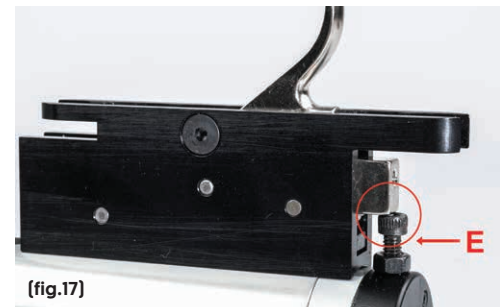
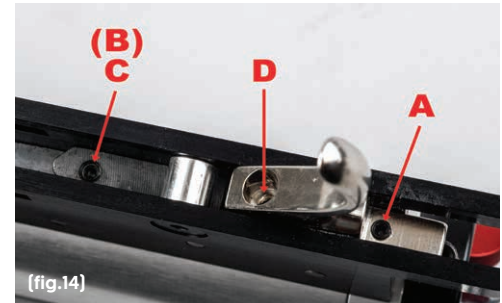
**Warning – Only make minimal adjustments to the trigger's second stage; never more than a 1/8<sup>th</sup> turn. The trigger will have been set-up for safe operation at the factory. Subsequently altering adjustment screw [C] from this original position can render the trigger dangerous or inoperable. It is therefore recommended that any trigger adjustments are made in conjunction with a qualified gunsmith or Daystate agent**

## SAFETY CATCH – operation and adjustment

The Huntsman Revere is fitted with a manual safety catch at the rear of the action. Rotate it anti-clockwise to engage it [safety 'on'] – [fig.15]. Rotate it clockwise to disengage it [safety 'off'] – [fig.16].

Note: When the safety catch lines up with the red dot, the rifle is in 'fire' mode.

**Important: If the trigger's first stage and/or blade angle has been altered from the factory setting, ensure that bolt [E] (fig.17) is correctly adjusted to ensure the correct action of the safety catch**



# Fitting a Riflescope

For maximum accuracy, your Daystate rifle requires a separate riflescope (telescopic sight) to be mounted, although other sights [eg: red-dot, reflex, night-vision] may also be used. Daystate recommends riflescopes from MTC Optics [mtcoptics.com], and two-piece BluePrint mounts. You should choose your scope and mounts with due consideration to the rifle and your shooting needs.

## Attaching the mounts

Note: Select a scope mount with the correct clamp/height/ring size

- With the top straps removed to expose the mount cradles, position the mounts on the rifle's dovetails in a position that allows the correct eye-relief of the scope when you are aiming the rifle
- Ensure the saddle of the scope does not interfere with the magazine when it is inserted into the breech
- Attach the top straps, but only nip-up their bolts finger tight; just enough to stop the scope turning freely, but still allow it to be rotated by hand

## Aligning the crosshair

- Using a gun-vice or similar, place a spirit level across the rifle's breech block to ensure it is level
- Look through the scope and rotate it until the crosshairs are perfectly vertical and horizontal. You can use a plumb line downrange as an aid
- Once the crosshairs are aligned to the rifle, tighten all the mount ring bolts to their recommended torque

## Zeroing the scope to the rifle

- Set up a large paper target with a visible mark in the centre around 10 metres [12 yards] away and in front of a safe, suitable backstop. This may be closer than the distance you prefer to shoot at, but it is a method used to initially zero your rifle/scope
- Aiming at the mark, fire a few pellets and note where they strike\*
- Turn the scope's elevation and windage turrets the required amount to move the group toward the aiming mark, and repeat the procedure until the shots impact roughly at the aim point
- Then move the target to your primary zero distance and fine-tune the scope's elevation and windage turrets until the combo is precisely zeroed-in

\*NOTE: If the initial shots group more than 130mm [5ins] below the aim point, then the REAR mount may need to be moved upwards by using an adjustable mount or 'shimmed' to provide enough adjustment on the scope's elevation turret. In this instance, place a sliver of silver foil, folded to a maximum thickness of 0.3mm, between the scope and the mount's lower cradle. Do not pack the mount over .3mm as this may damage the scope.





# Recommended Maintenance

Precharged pneumatic air rifles contain extremely high air pressures and can be dangerous if not serviced correctly. Daystate recommends that all work is carried out by a Daystate factory-trained gunsmith. Correct maintenance will ensure longer life; we therefore recommend that your rifle be returned to the factory or your Daystate approved servicing agent for routine maintenance **every three years**.

Between service intervals, you can keep your rifle shooting trouble-free by paying due attention to the following areas of the rifle and its charging equipment:

## AIR RESERVOIR

The steel under-barrel pressure cylinder on the Huntsman Revere will withstand pressures many times the safe working pressure of the rifle. However, the rifle should be returned to the factory or approved agent to be inspected for air cylinder replacement after 10 years; the Revere's air cylinder is date stamped to assist this inspection protocol.

## CHARGING UNIT – HAND PUMP

Hand-operated stirrup pumps offer an inexpensive and convenient method of charging your rifle. They do not contain the sophisticated water extraction and dirt removal filters found in breathing quality air compressors and their use can shorten the life of sealing valves and O-rings. If you regularly use this type of charger, care should be taken to avoid condensation build-up from inside the pump being transferred into the rifle. The pump should not be used in sandy or dusty conditions. Always refer to the pump manufacturer's operating instructions.

## CHARGING UNIT – SCUBA TANK

Using a scuba tank to charge a rifle is probably the most convenient way to refill your rifle with compressed air. Keep all charging connectors clean and free from oil. Handle the charging unit carefully and NEVER blast high pressure air directly onto your skin.

## CHARGING UNIT – COMPRESSOR

There are now many electronic and petrol-engine compressors available that can deliver high pressure air up to 250BAR. When using such a compressor to directly fill the rifle, extreme care should be taken not to overfill the main air reservoir.

## ACTION

After every shooting session, protect your rifle's metal parts with an oil specified for airgun use. Apply the oil to a cloth and wipe over the rifle. NEVER allow oil into the rifle's filler valve or internal working parts.

## LUBRICATION

To maintain smooth cocking, periodically lubricate the bolt shaft and sidelever linkage with a light grease.

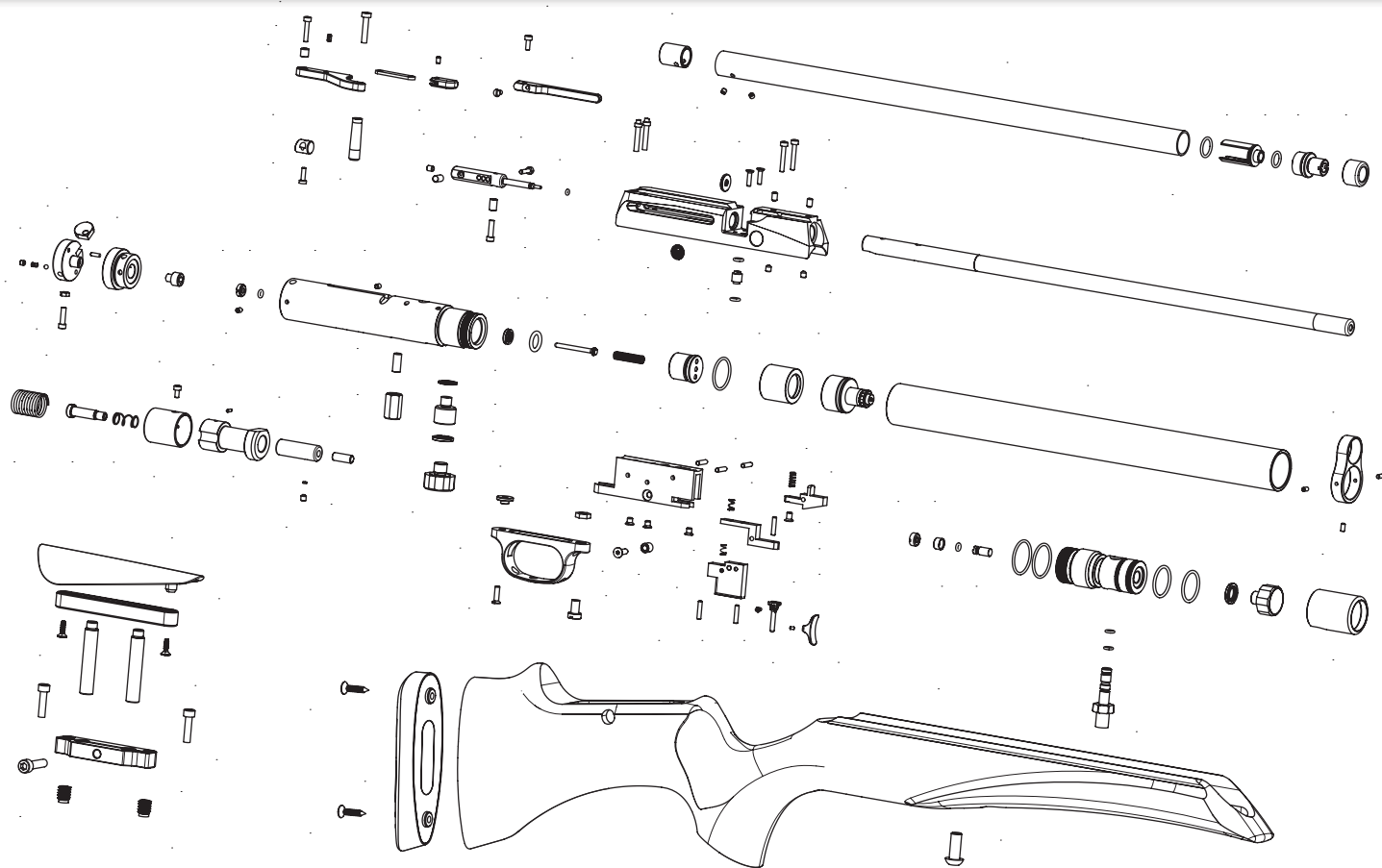
## BARREL CLEANING

For optimum performance, the barrel should be periodically cleaned using felt cleaning pellets lubricated with a light grade oil. Avoid the use of nitro-based cleaners as their chemicals can damage seals. Cleaning frequency depends on the pellets used and the individual barrel; as a general guide, do it each time you begin a new tin of pellets.

## STOCK

The Huntsman Revere's stock can be removed by unscrewing the single stock bolt just forward of the trigger guard using a 5mm hex wrench. Wipe over walnut stocks with a suitable stock oil or boiled linseed oil. Wipe over synthetic stocks using a mild detergent.

# Huntsman Revere – Diagram Of Parts



# Your Daystate Warranty

## 3 YEAR WARRANTY

All new Daystate rifles are guaranteed against faulty parts and labour for a period of three years from date of purchase [proof of purchase required]. After this period, it is recommended that the rifle be returned to Daystate or its authorised agent for a scheduled service, and every three years subsequently. Servicing is charged at current rates. The warranty applies to the first purchase of a new rifle and is not transferable.

Register your warranty at [daystate.com/warranty](https://daystate.com/warranty)

## EXCLUDED FROM WARRANTY

Failure due to misuse or abuse, the fitting of non-standard parts, springs, seals, water-damage, batteries and fair wear and tear. Daystate Ltd or its approved agent must carry out all maintenance and warranty work. The rifle must be maintained and used as outlined in this Instruction Manual.

Should a rifle be returned or collected under warranty, Daystate or its approved agent reserve the right to charge for postage and inspection costs.

A return form, which should be included with the rifle, can be downloaded at

[daystate.com/wp-content/uploads/2018/05/Rifle-Return-Form.pdf](https://daystate.com/wp-content/uploads/2018/05/Rifle-Return-Form.pdf)

Ensure that the rifle is securely packed. Where possible, please remove the scope and other accessories to avoid the possibility of transit damage.

*While every effort is taken to ensure the accuracy of the information in this instruction manual, Daystate Ltd or its agents cannot be held responsible for errors or omissions. Products are continually updated, and specification may change without notice.*





THE WORLD'S FINEST AIRGUNS



DAYSTATE LTD, UNIT 3 RALEIGH HALL INDUSTRIAL ESTATE,  
ECCLESHALL, STAFFORDSHIRE ST21 6JL. UK



***daystate.com***

