

Daystate 
the world's most powerful airguns



The Official Handbook 9th Edition

Wolverine B • Wolverine C • Wolverine HiLite • Wolverine HP • Wolverine 303

www.daystate.com



Contents

Safety & general information	3
Filling your air rifle with compressed air	4
Loading your rifle – single shot.....	4
Loading the Daystate multi-shot magazine.....	5
Switching bolt positions (right to left handed)	6
Recommended maintenance	7
Trigger adjustment	8
Pellet recommendations	8
Wolverine technical data	8
Fitting a scope	9
How to 'zero' a scope	9
Exploded view technical drawings	10
Warranty	12

SAFETY

- Never point your airgun at anyone or anything other than a legitimate target.
- Always check that your airgun is not loaded when you first pick it up.
- Always treat your airgun as if it was loaded, even if you know it's not.
- Never shoot on land where you do not have permission to shoot.
- Always use a safe, large backstop to catch your pellets - and pay due attention to what's behind it, should you miss.
- Never leave your airgun unattended.
- Always store your airgun and pellets separately and securely so that no unauthorised person can use them.
- Know and abide by the laws relating to airguns.



GENERAL INFORMATION

Congratulations on choosing a Daystate air rifle. Your rifle has been hand assembled using the finest materials available, from parts precision made using CNC engineering technology. This rifle is the culmination of Daystate's involvement with pre-charged air rifles and uses knowledge gained from manufacturing this type of air rifle for almost four decades, making your Daystate one of the most accurate and reliable rifles available today. Use this handbook to get the best from your rifle. Further information that includes more detail on the topics covered can be found online at www.daystate.com/support under the online handbook. Daystate also has an active owners club which is free to join and can be found online at <http://v2.daystateowners.com>

FILLING YOUR AIR RIFLE WITH COMPRESSED AIR

Note: Do not use any other gas than clean, dry compressed AIR.

- Remove the dust cap from the rifle's charging connector and attach the female snap-on charging connector onto the inlet valve. Ensure that the outer sleeve is fully forward and that the connection is secure.
- Check that the bleed screw on the charging unit is closed and open the feed valve on the air bottle. Compressed air will now fill the reservoir.
- Fill to a maximum of 230 bar (303 version max. 250 bar). The exact filling pressure (SWP) is printed on a small disc at the rear of the breechblock.
- Close the feed valve.
- Sharply open the bleed valve on the charging unit and bleed off the air from the filler hose.
- Remove the snap-on connector and replace the dust cap.

LOADING YOUR RIFLE – SINGLE SHOT

REMEMBER TO KEEP THE MUZZLE OF THE AIR RIFLE POINTING IN A SAFE DIRECTION AT ALL TIMES.

- Apply the safety catch
- Lift the cocking handle at the rear of the breech block and pull all the way back until fully cocked*.
- Check that the pellet is not damaged and push the pellet **directly in to the barrel**.
- Push the cocking handle forward and make sure that the handle is down.

THE AIR RIFLE IS NOW LOADED

Disengage the safety catch and the rifle will now fire.

NOTE: The rifle can be 'dry' fired (with air and no pellet in the breech) without any mechanical damage occurring as long as there is enough air.

* With the breech bolt open the trigger is disengaged and the rifle will not fire or cannot be de-cocked.



air filling point Wolverine B, C & HiLite



air filling point Wolverine 303 & HP



LOADING THE DAYSTATE MULTI-SHOT MAGAZINE.

REMEMBER TO KEEP THE MUZZLE OF THE AIR RIFLE POINTING IN A SAFE DIRECTION AT ALL TIMES.

- Apply the safety catch.
- Lift the cocking handle at the rear of the breech block and pull all the way back until fully cocked. Remove the magazine from the left side. A dedicated Left Handed Magazine can be ordered with the location magnet mounted on the right side for right hand removal.
- The magazine can now be loaded. Load one pellet into the LARGE bottom hole ensuring that the pellet head passes the seating o-ring. Rotate anti clockwise to load subsequent pellets one click at a time.
- Replace the magazine back into the breech block and return the bolt forward to the closed and locked position.



THE AIR RIFLE IS NOW LOADED

Disengage the safety catch and the rifle will now fire.

- To fire the next shot rotate the breech bolt by 45° upwards and pull fully back. Return the bolt forwards to the locked position to chamber a pellet into the barrel.
- When the last shot is chambered a red dot is displayed on the left side of the magazine. It is possible to remove and 'top up' the magazine should shooting time allow.



Accessories from Daystate...

SWITCHING BOLT POSITIONS

All Wolverine rifles are fitted with an ambidextrous stock and can be converted by the shooter to left or right handed bolt action.

To switch the bolt:



A dedicated left handed magazine can be ordered with the location magnet and pin fitted on the right side.

RECOMMENDED MAINTENANCE

RECOMMENDED MAINTENANCE

Pre-charged air rifles contain extremely high pressures and can be dangerous if not serviced correctly. Daystate recommends that all work is carried out by a Daystate factory-trained gunsmith. Correct maintenance will ensure longer trouble free life, therefore Daystate recommend the rifle be returned to the factory or your Daystate approved servicing agent for routine maintenance every three years.

BARREL CLEANING

For optimum performance the barrel should be periodically cleaned with a barrel cleaning solution recommended for air rifles or a light grade oil. Daystate also recommend the use of a pellet lubricant to reduce lead deposits and maintain the barrel. Frequency of cleaning depends on the pellets used and the individual barrel, but as general guidance the barrel should be cleaned at least every 500 pellets.

AIR RESERVOIR

The Alloy under-barrel pressure cylinder will withstand pressures many times the working pressure of the rifle. The aluminium air cylinder, specific to Wolverine rifles, should be replaced every 10 years.

HAND PUMPS

This type of charger offers an inexpensive and convenient method of charging your rifle. If you regularly use this type of charger, care should be taken to avoid condensation build-up from inside the pump being transferred to the rifle. Always refer to the pump manufacturers operating instructions.

WALNUT STOCK

Walnut stocks have an oiled finish; the stock should be periodically wiped over with suitable walnut stock oil or boiled linseed oil.

ACTION

To keep the rifle clean, a suitable gun oil can be applied to a cloth and be used to wipe over the outside of the gun.

LUBRICATION

The bolt shaft should be lubricated every month or so with a small amount of light grease. Do not allow any grease to get onto the pellet channel where it could enter the barrel. DO NOT OIL OR GREASE any of the internal parts such as the striker or hammer, the inlet valve system or the snap-on connector (filler valve). Doing this could cause problems with consistency & unit sealing

MORE INFORMATION

More servicing information can be found online at www.daystate.com/support and <http://v2.daystateowners.com>



TRIGGER ADJUSTMENT

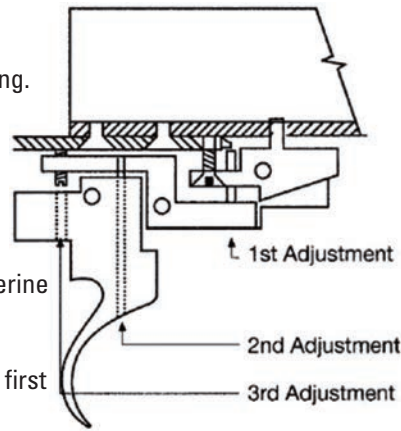
TWO-STAGE TRIGGER - Allen Key Size: 1.5 mm

1ST ADJUSTMENT: Adjusts the second stage weight setting. Remove the locking screw. To increase the weight, turn the screw anti-clockwise, and clockwise to lighten the weight. **IMPORTANT.** Do not adjust this screw too far clockwise as the gun will not cock.

2ND ADJUSTMENT: Do not adjust this screw on the Wolverine as it may cause the safety catch to be inoperable

3RD ADJUSTMENT: Adjustment: this screw will adjust the first stage travel. Turning the screw anti-clockwise to increase travel and clockwise to decrease travel.

Note: Over-adjusting may adversely affect the smooth running of the rifle.



PELLET RECOMMENDATIONS

The Daystate multi-shot magazine has been engineered for round-nosed pellets and may miss-align or even jam if used with other shapes.

Recommended pellet types:

Wolverine B, C : Rangemaster Sovereign .177 & .22

Wolverine HP : Rangemaster Monster .22

Wolverine 303 : Rangemaster Emperor



WOLVERINE TECHNICAL DATA

	Wolverine 303 HiLite	Wolverine 303	Wolverine HP (Hi-Power)	Wolverine "B" Type	Wolverine "C" Type	Wolverine B HiLite
Overall Length:	112 cm (44 ins)	112 cm (44 ins)	112 cm (44 ins)	97cm (38.5 ins)	97cm (38.5 ins)	97cm (38.5 ins)
Barrel Length:	60 cm (23 ins)	60 cm (23 ins)	60 cm (23 ins)	43 cm (17 ins)	43 cm (17 ins)	43 cm (17 ins)
Cylinder Capacity:	480 cc	300 cc	300 cc	400 cc (500cc on 30 ft/lbs)	200 cc (300cc on 30 ft/lbs)	480 cc
Weight (unscoped):	3.7 kg (8.1 lbs)	4.2 kg (9.5 lbs)	4.1 kg (9.1 lbs)	3.5 kg (7.7 lbs)	3.5 kg (7.7 lbs)	3.4 kg (7.5 lbs)
Available Calibres:	0.303 inch (7.62 mm)	0.303 inch (7.62 mm)	0.22 inch (5.5mm)	0.22 (5.5mm) & 0.177 (4.5mm)	0.22 (5.5mm) & 0.177 (4.5mm)	0.22 (5.5mm) & 0.177 (4.5mm)
Loading:	Bolt action - reversible	Bolt action - reversible	Bolt action - reversible	Bolt action - reversible	Bolt action - reversible	Bolt action - ambidextrous
Magazine:	5 Shot	5 Shot	10 Shot	10 Shot	10 Shot	10 Shot
Fill Pressure:	Up to 250 BAR	Up to 250 BAR	Up to 250 BAR	170 - 220 BAR	170 - 220 BAR	170 - 220 BAR
Power / Shots Per Charge: 0.303	20 shots @ 100 ft/lbs	12 shots @ 100 ft/lbs	N/A	N/A	N/A	N/A
Power / Shots Per Charge: 0.22	N/A	N/A	16 shots @ 60 ft/lbs	225 @ 12 ft/lbs 100 @ 30 ft/lbs	125 @ 12 ft/lbs 60 @ 30 ft/lbs	400 @ 12 ft/lbs 85 @ 30 ft/lbs
Power / Shots Per Charge: 0.177	N/A	N/A	N/A	200 @ 12 ft/lbs 120 @ 18 ft/lbs	135 @ 12 ft/lbs 85 @ 18 ft/lbs	250 @ 12 ft/lbs 110 @ 18 ft/lbs
Trigger:	Mechanical - 2 Stage	Mechanical - 2 Stage	Mechanical - 2 Stage	Mechanical - 2 Stage	Mechanical - 2 Stage	Mechanical - 2 Stage
Safety:	Bolt open safety, mechanical safety switch	Bolt open safety, mechanical safety switch	Bolt open safety, mechanical safety switch	Bolt open safety, mechanical safety switch	Bolt open safety, mechanical safety switch	Bolt open safety, mechanical safety switch
Stock:	Thumbhole Ambidextrous Turkish Walnut	Ambidextrous Turkish Walnut	Ambidextrous Turkish Walnut	Ambidextrous Thumbhole Turkish Walnut	Ambidextrous Thumbhole Turkish Walnut	Ambidextrous Thumbhole Turkish Walnut
OPTIONS:	Silencer, sling swivels, gun box, charging set	Silencer, sling swivels, charging set	Silencer, sling swivels, gun box, charging set	Silencer, sling swivels, gun box, charging set, single shot tray, 500cc bottle	Silencer, sling swivels, gun box, charging set, single shot tray 300cc tube, tactical bipod	Silencer, Sling swivels, gun box, charging set, single shot tray

Fitting a Rifle Scope

Attaching the mounts

Daystate recommend the use of Blueprint Mounts. Loosely fix one mount to the dovetails on the front section of the breech block and the other on the rear*. Place the scope with the scope's saddle to the rear of the magazine as pictured.



Scope shown; MTC Mamba Lite 4-16 x 44
Mounts shown; Blueprint two-piece 25mm low in black



Aligning the crosshair

You will need either a gun-vice or 'Workmate' as to align the sight the rifle will need to be held firm and level.

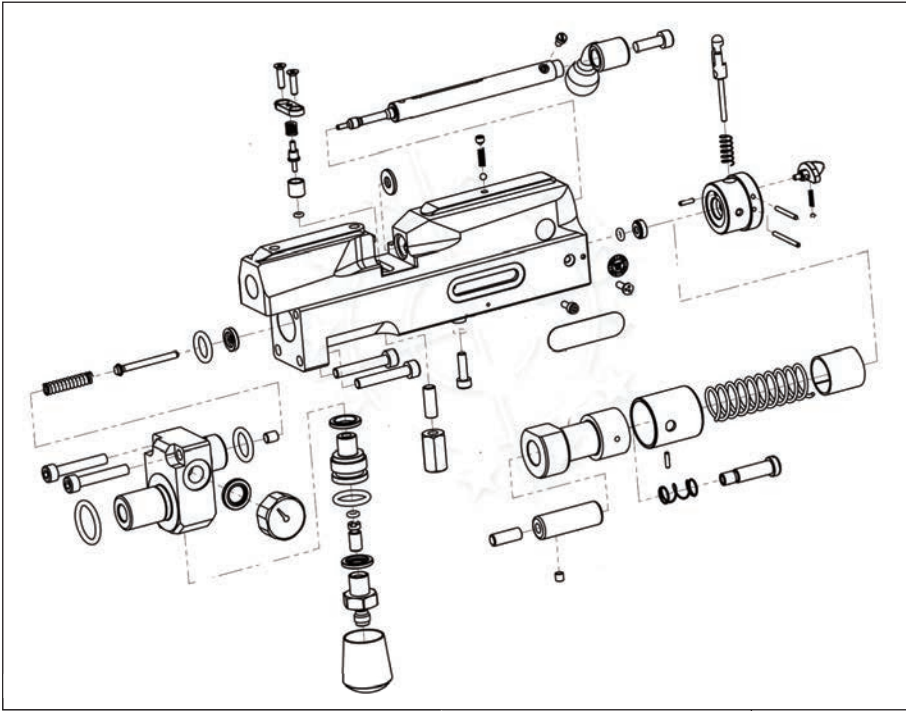
- Place the gun vice or workmate on a firm and level surface.
- Clamp the rifle, making sure that you do not damage the stock.
- Place one spirit level across the flat part of the breech block and adjust the rifle until it is level.
- Now look through the sight and without moving the rifle rotate the scope until the vertical cross hair aligns with the plumb line - All screws should now be tightened.

To zero the rifle

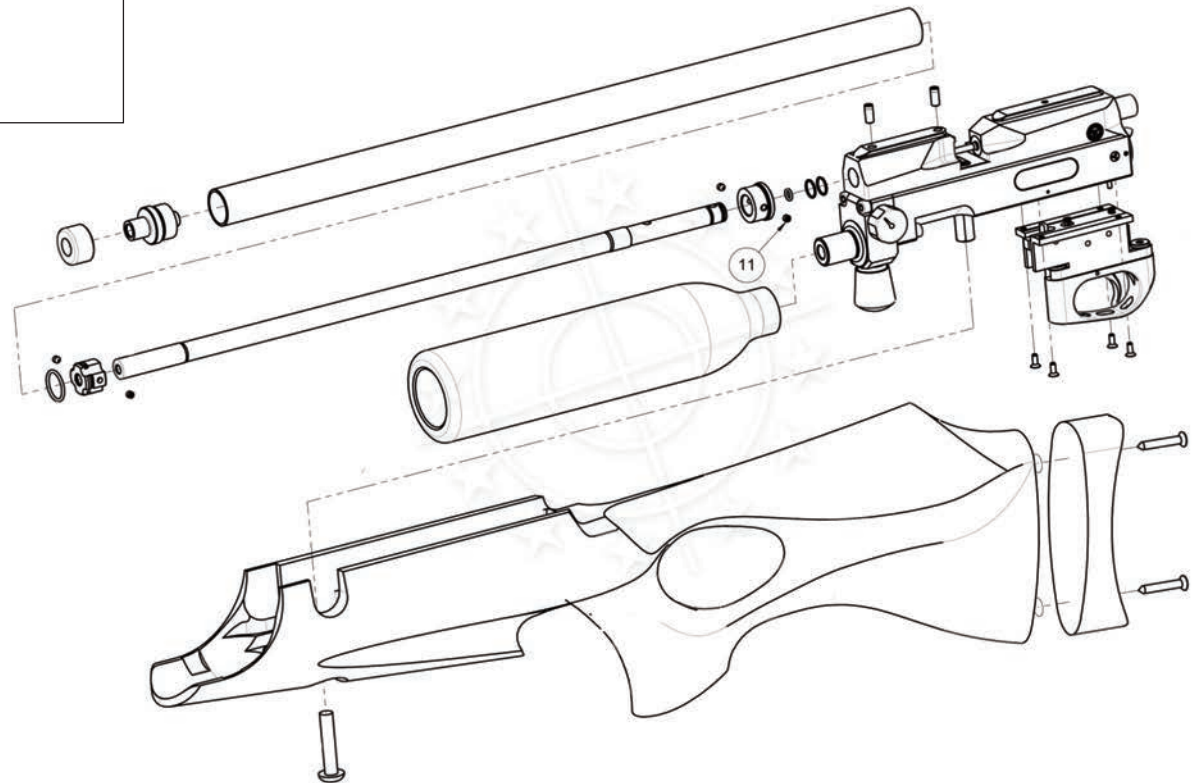
- Set up a large paper target, with a safe and suitable backstop at around 12yds
- Mark a simple cross on the target and from about 12 yds (10 metres) . Fire a test shot
- If the pellet is close to the 'mark' then note its position
- If the shot was lower than 5 inches (130 mm) then you will probably run out of adjustment on the elevation turret and it will be necessary to pack up the back of the scope*
- Using the turrets on your scope, adjust until the centre of the crosshair and the pellet hole coincide
- Repeat stages 1-4 at your chosen zeroing distance

*It is quite common when sighting in an airgun to need to tilt the scope forward by shimming the rear mount by up to .3 mm. A good material to use for this purpose is 35mm film negative or lead tape (used to weight golf clubs). Simply cut the shim to the same size as the mount and place it between the scope and the rearmost mount.

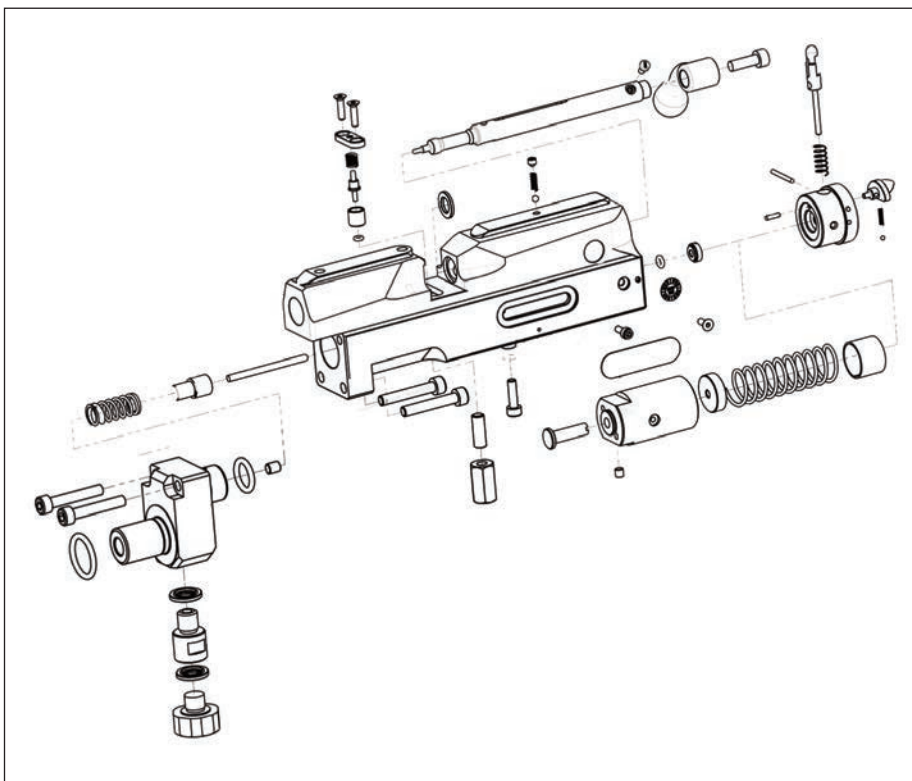
ASSEMBLY DRAWINGS



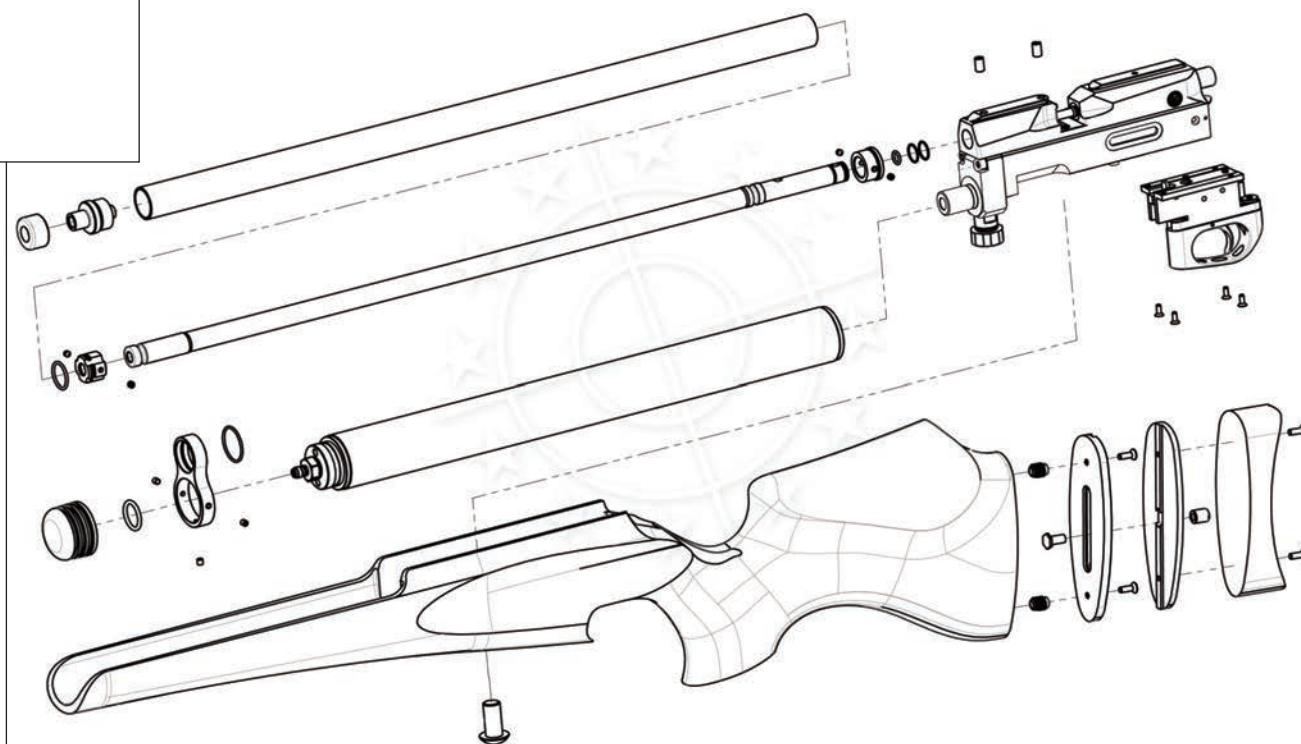
◀ Integral breech sub assembly (Wolverine B & C)



General assembly (Wolverine B & C) ▶



◀ Integral breech sub assembly
(Wolverine HP & 303)



General assembly (Wolverine HP & 303) ▶



3 YEAR WARRANTY

All new Daystate rifles are guaranteed against faulty parts and labour for a period of 3 years from date of purchase (proof of purchase required). After this period it is recommended that the rifle be returned to Daystate or its authorised agent for a scheduled service and subsequently every 3 years. Servicing is charged at current rates. The warranty applies to the first purchase of a new rifle and is not transferable to subsequent owners.

EXCLUDED FROM WARRANTY

Failure due to misuse or abuse, the fitting of non-standard parts, springs, seals, water-damage to wooden stocks, batteries and fair wear and tear. Daystate Ltd or their approved agent must carry out all maintenance and warranty work. The rifle must be maintained and used as outlined in this Instruction Manual. Should a rifle be returned or collected under warranty, Daystate or its approved agent reserve the right to charge for postage & inspection costs.

While every effort is taken to ensure the accuracy of the information in this instruction manual, Daystate Ltd or their agents cannot be held responsible for errors or omissions. Products are continually updated and specification may change without notice. Visit the online handbook at www.daystate.com/support for the latest information. E&OE.

www.daystate.com

DAYSTATE LTD. UNIT 3, RALEIGH HALL INDUSTRIAL ESTATE, ECCLESHALL, STAFFORDSHIRE ST21 6JL.