

Daystate 



RED WOLF
OFFICIAL HANDBOOK

CONTENTS

3. FILLING YOUR AIR RIFLE WITH COMPRESSED AIR
3. LOADING YOUR RIFLE (SINGLE SHOT METHOD)
4. LOADING THE MULTI-SHOT MAGAZINE
4. MAGAZINE ORIENTATION
4. FITTING A RIFLESCOPE
5. SWITCHING SIDELEVER POSITION
6. PELLET RECOMMENDATIONS
6. PROGRAMMING THE RIFLE
7. STOCK ADJUSTMENTS
8. MAINTENANCE
9. ADJUSTING THE TRIGGER
10. DIAGRAM OF PARTS
12. WARRANTY INFORMATION

GENERAL INFORMATION

Congratulations on choosing the Daystate Red Wolf air rifle. Your rifle has been hand assembled using the finest materials available, from parts precision-made using CNC engineering technology. This rifle is the culmination of the company's involvement with precharged air rifles and uses knowledge gained from manufacturing this type of air rifle for almost four decades, making your Daystate one of the most accurate and reliable rifles available today. Use this handbook to help you get the best from it.

The latest information can be found online at: www.daystate.com/support (search 'online handbook').

Daystate also has an active Owners' Club. This is free to join and can be found online at: www.daystateownersclub.com.

SAFETY

- Never point your air rifle at anyone or anything other than a legitimate target
- Always check that your air rifle is not loaded when you first pick it up
- Always treat your air rifle as if it were loaded, even if you know it's not
- Never shoot on land where you do not have permission to shoot
- Always use a safe, large backstop to catch your pellets - and pay due attention to what's behind it, should you miss
- Never leave your air rifle unattended
- Always store your air rifle and pellets separately and securely so that no unauthorised person can use them
- Know and abide by the laws relating to airguns in your state or country

FILLING YOUR AIR RIFLE WITH COMPRESSED AIR

Note: DO NOT USE any gas other than clean, dry compressed AIR. The rifle can be filled from a scuba tank or hand (stirrup) pump.

1. Screw on the supplied snap-on female charging connector to your hose assembly
2. Pull off the magnetic dust cap from underneath the forestock to expose the rifle's male air inlet valve
3. Firmly attach the snap-on connector to the inlet valve. Ensure that the connector's outer sleeve has locked and that the connection is secure
4. Close the bleed screw on your charging unit
5. Slowly open the main air feed valve (if using a scuba tank/air bottle), or begin pumping (if using a hand pump), to allow air to transfer into the rifle's main air reservoir
6. Noting the gauge on your charging assembly, fill to the rifle's maximum pressure (SWP). As this may vary according to model, refer to the SWP figure printed on the small disc inlet into the breech block. Do not fill above this figure
7. Once the desire pressure has been reached, shut the main air feed valve on the charging unit
8. Sharply open (and leave open) the bleed valve on the charging unit until

all the air from the filler hose has been bled off

9. Remove the snap-on connector from the rifle, and replace the magnetic dust cover



LOADING YOUR RIFLE – SINGLE SHOT METHOD

Remember to keep the muzzle of the air rifle pointing in a safe direction at all times.

- Apply the safety catch (slide to left) located at the rear of the breech block
- Pull the cocking sidelever all the way back
- Slide the magazine out of the breech (if deployed) and insert the supplied single-shot tray, with the locating pins to the front
- Place a pellet into the channel, nose first, and return the sidelever to push the pellet into the barrel. The rifle is now loaded
- Disengage the safety catch (slide to right) and the rifle is ready to be fired.

LOADING THE MULTI-SHOT MAGAZINE

Remember to keep the muzzle of the air rifle pointing in a safe direction at all times.

- Apply the safety catch (slide to left) located at the rear of the breech block
- Pull the cocking lever all the way back
- Slide the magazine out of the breech (if deployed)
- To load an empty magazine, insert one pellet, nose first, in to the exposed aperture at the bottom of the magazine. Make sure the pellet's head is pushed past the O-ring on the inside of the chamber

- Load the remaining chambers in the same way, rotating the magazine drum anti-clockwise, one click at a time
- Re-insert the magazine and return the sidelever to its closed position
- Disengage the safety catch (slide to right) and the rifle is ready to be fired
- Fully opening and closing the cocking sidelever will automatically index the magazine and load the next pellet into the breech. Note: the magazine will not rotate until the rifle has been fired. This means that inadvertently operating the sidelever again will not double-load the rifle
- When the magazine's last shot is chambered, a dot is visible on the side of the drum. Additionally, if the rifle's Magazine On/Off countdown mode has been set to "Magazine On", four small pulses will be felt immediately after the last shot has been discharged, and the LCD information screen will read "Mag Empty MO"

Note: The rifle can be 'dry' fired (no pellet in the breech) without any mechanical damage occurring, providing there is enough air in its cylinder.

MAGAZINE ORIENTATION

- From the factory, the magazine inserts / removes from the left side of the breech, but relocating its stop-pin and magnet to the opposite side allows right-hand operation. Use a 1.5mm hex key (or similar

and a small hammer to drive out the magnet; extract the stop-pin with needlenose pliers

- In the case of the Red Wolf, the stop-pin locates in the upper hole (other Daystate models may use the lower hole)

FITTING A RIFLE SCOPE

ATTACHING THE MOUNTS

Daystate recommend the use of Blueprint Mounts.

- Loosely fix one mount to the dovetails on the front section of the breech block and the other on the rear

ALIGNING THE CROSSHAIR

In order to perfectly align the sight, you will need either a gun-vice or 'Workmate' to hold the rifle firm and level.

- Place the gun-vice on a firm and level surface
- Clamp the rifle, making sure not to damage the stock
- Place one spirit level across the flat part of the breech block and adjust the rifle until it is level
- Look through the sight and, without moving the rifle, rotate the scope until the vertical crosshair aligns with a vertical plumb line. Tighten all scope mount screws and double-check vertical alignment

TO ZERO THE RIFLE

- Set up a large paper target, with a safe and suitable backstop at around 10 metres

- Fire a test shot at this distance. If the pellet strikes close to your aim-point, note its position. (Note: If the shot strikes lower than 5 inches (125 mm), then you will need to shim up the rear scope mount*)
- Using the elevation and windage turrets on the scope, adjust until the centre of the crosshair and the pellets' point of impact coincide
- Now move the target to your chosen primary shooting distance (zero range) and fine-tune the scope's zero in the same manner
- * It is common to have to raise a scope by placing a shim in the rearmost mount, between the base of the rear cradle and the scope tube. A shim should be no more than 0.3mm thick to avoid stressing the scope. Suitable material is film negative or aluminium foil folded to the required thickness.

SWITCHING SIDE-LEVER POSITIONS

The Red Wolf is fitted with an ambidextrous stock, and (like the magazine's operation), its sidelever can be switched to cock from the right or left.

TO SWITCH THE LEVER:

- With a 2.5mm hex tool, unscrew and remove the pivot/bolt on the top, rear of the breech block
- Extract the complete sidelever and bolt assembly
- With a 2mm hex tool, loosen (but do not remove) the two, small hex-head bolts visible through the exposed breech block

opening. A quarter turn is all that is needed

- Slide the blanking plate out of the rear of the breech block
- Refit the blanking plate on the opposite side, and re-tighten the hex-head bolts to secure in place
- Re-insert the sidelever and bolt assembly on the opposite side, and secure in place by refitting the pivot/bolt. Do not overtighten
- Using a 2.5mm hex tool, relocate the sidelever's cocking handle to the underside of the lever

BATTERY

THE RIFLE IS POWERED BY A RECHARGEABLE LI-PO BATTERY, LOCATED IN THE GRIP. THIS BATTERY HAS TO BE REMOVED WHEN ITS VOLTAGE DROPS BELOW THE REQUIRED LEVEL

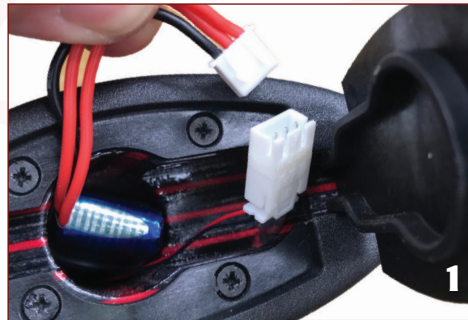
- When the LCD information display shows "Low Battery", ensure the rifle is not loaded and then apply the safety catch (slide to left)
- Open the battery door at the base of the pistol grip and extract the Li-Po battery
- Detach the battery from the rifle by disconnecting the bayonet terminal, and recharge from the mains supply using the supplied battery charger
- Once the battery is charged, reconnect it to the rifle by reversing the above procedure

Note: A fully-charged battery will provide enough power for many thousands of shots.

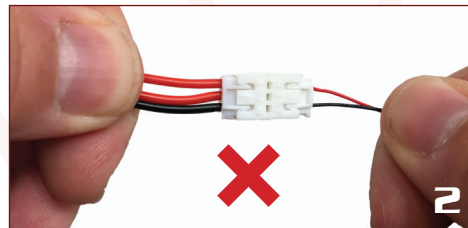
ELECTRONIC RIFLE UNIVERSAL BATTERY CHARGER

Your Electronic Daystate Red Wolf Rifle has been provided with a 2 Cell Li-Po Battery and universal charger, VTE600II-Combo.

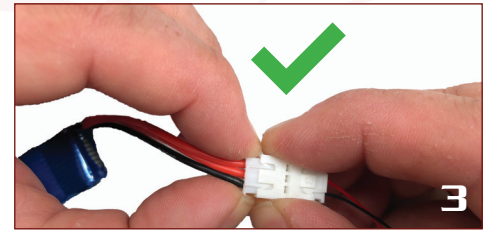
Please use this quick start guide inline with the manufacturer documentation accompanying the battery charger.



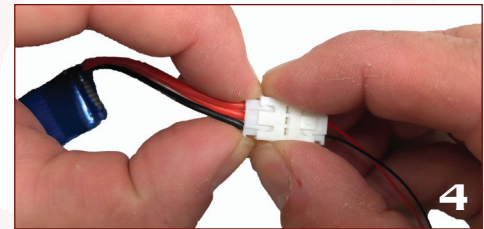
1 Open battery flap to access battery connector block



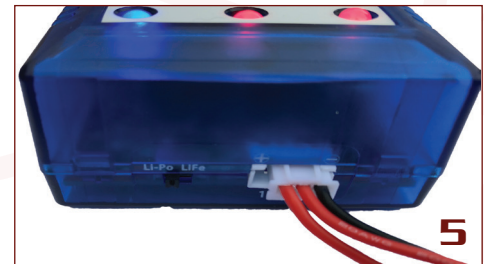
2 DO NOT separate battery connector as shown as wires may break. Always separate carefully as figure 3



3 Separate battery connector with finger tips as shown before withdrawing battery



4 Correct disconnection method



5 Connect battery to charger as shown ensuring charging switch is set to Li-Po, and black lead to -negative



6 When charging, and battery is below 80%, cell one and two will light as RED as per photo



7 When charging, and battery is between 80% & 90%, cell one and two will light as per photo



8 When charging completed, all LED's will be a solid BLUE.

*Note: Refer to charger manufacturer product instructions provided for further detail

AUTO-SAFETY FEATURE (POWER SAVE)

- If the safety catch is left in the 'fire' position (moved to the right) for five minutes without a shot actually being fired, the rifle automatically switches to standby (power-save) mode. To reactivate the rifle, re-apply the safety catch (slide left, then right) or open and close the sidelever*

* Operating the sidelever like this will not load another pellet.



PELLET RECOMMENDATIONS

The Daystate multi-shot magazine has been engineered for round-nosed pellets and may misalign or jam if used with pellets of other configuration. Daystate recommends the following pellet types:

- Rangemaster Sovereign .177, .22, .25
- Rangemaster Kaiser .177, .22
- Rangemaster Monster .25



PROGRAMMING THE RIFLE

The Red Wolf's electronic action provides the use with a choice of shooting in high, medium or low power mode, and with or without a magazine shot countdown function.

NOTES: Before putting the rifle into program mode, ensure it is unloaded and the safety catch is 'on' (slide to left). The following procedures should always be carried out with the muzzle pointing in a safe direction.

- Open the sidelever and pull back the trigger, maintaining pressure for five seconds*. Release the trigger when the LCD display shows "Programming Mode"
- Immediately (and with the sidelever still open) re-apply pressure to the trigger to scroll through through the available modes:
 - Magazine On/Off
 - Power Level
- Release the trigger at the desired mode to toggle through the options available within that mode. Once the desired program has been selected, close the lever and wait a few seconds until the rifle reverts to normal shooting mode.



MAGAZINE ON/OFF

- With magazine countdown "On", the rifle resets to "M10" and will count down to "MO". After the tenth shot, the rifle will pulse four times and stop firing. To reset the counter and resume firing with a fresh magazine, open the bolt for five seconds
- With magazine countdown "Off", the rifle will not count down the shots in the magazine, so this is the recommended setting when using the single-shot tray (manual loading)

POWER LEVEL

- With power level set to "Hi Power", the rifle will shoot at its maximum setting (dependent on model).
- With power level set to "Mid Power" or "Low Power", the rifle will shoot at a percentage of its maximum power (dependent on model)
 - *If the rifle is in standby (power-save) mode, it will be necessary to switch the safety catch on and off (slide right, then left) in order to power-up the rifle

NOTE: In addition to the user program options, there are two further features that automatically apply where relevant. In both cases, the LCD information screen will display the rifle's status.

- "Low Battery" - the battery will need to be recharged
- "Low Pressure" - the rifle's air cylinder will need to be refilled. The pressure at which the warning will show is dependent on the model

STOCK REMOVAL

According to model, the cheekpiece and butt pad are adjustable to help obtain a tailored gunfit.

CHEEKPIECE

- Loosening the bolt located on the right of the butt with a 5mm hex tool will allow the cheekpiece to be vertically repositioned
- The lateral and fore/aft positions of the cheekpiece can also be adjusted. Remove the cheekpiece completely and adjust the comb's position by loosening/re-tightening the hex-head bolts on the underside of the cheekpiece. Use a 4mm hex tool to adjust the lateral position; a 3mm hex tool for the fore/aft position.

BUTT-PAD ADJUSTMENT

- Loosening the bolt in the centre of the butt-pad with a 5mm hextool will allow the pad to be vertically repositioned
- The cast (left or right) of the butt-pad can also be adjusted. Remove the butt-pad completely. Then adjust the cast by loosening/re-tightening the small hex-head bolts with a 2.5mm hex tool



RECOMMENDED MAINTENANCE

Precharged pneumatic air rifles contain extremely high pressures and can be dangerous if not serviced correctly, all work should be carried out by a Daystate factory-trained gunsmith. Correct maintenance will ensure a long, trouble-free life. Daystate recommends that the rifle be returned to the factory or your Daystate-approved servicing agent for routine maintenance every three years.

BARREL CLEANING

For optimum performance, the barrel should be periodically cleaned with a barrel cleaning solution recommended for air rifles, or a pellet lubricant. Daystate also advises the use of a lubricant applied to the pellets to reduce lead deposits and maintain the barrel. Frequency of cleaning depends on the pellet type used and the individual barrel; for general guidance, the barrel should be cleaned after every 500 shots.

AIR RESERVOIR

The Red Wolf's 'buddy-bottle' pressure bottle will withstand pressures many times the working pressure of the rifle. The air bottle should be replaced every 10 years.

ACTION

To keep the rifle clean, a suitable gun cleaner or oil can be applied to a cloth and used to wipe over the outside of the gun. DO NOT apply oil into the main inlet valve.

STOCK

Periodically rub in a good quality stock oil to maintain the finish of wooden and laminate stocks. Use a mild detergent on a synthetic stock.

LUBRICATION

Daystate has teamed up with Ballistol to provide ecologically and dermatologically safe lubricants for the maintenance your rifle. Periodically, the bolt shaft and sidelever pivots should be sparingly lubricated with light grease or oil. Do not lubricate any of the internal parts such as the firing valve or hammer assembly. The snap-on filling connector is factory-lubricated with a special non-combustible grease. The connector can be maintained by wiping over with oil or grease but should be left dry.

USE OF HAND PUMPS

This type of charger offers an inexpensive and convenient method of charging your rifle. If you regularly use this type of charger, care should be taken to avoid condensation build-up from inside the pump being transferred to the air cylinder. Always refer to the pump manufacturer's operating instructions.

MORE INFORMATION

More servicing information can be found online at www.daystate.com/support and www.daystateownersclub.com



MATCH TRIGGER ADJUSTMENT

Hex tool size: 1.5mm

Note: It is not necessary to remove the rifle's action from stock to adjust the trigger.

Ensure that the rifle's safety switch is in the 'SAFE' position (slide to left) and that rifle is unloaded.

Screw A: 2nd Stage Contact Screw
Factory set (Do Not Adjust)

Screw B: 2nd Stage Weight Screw
Adjust clockwise to make heavier

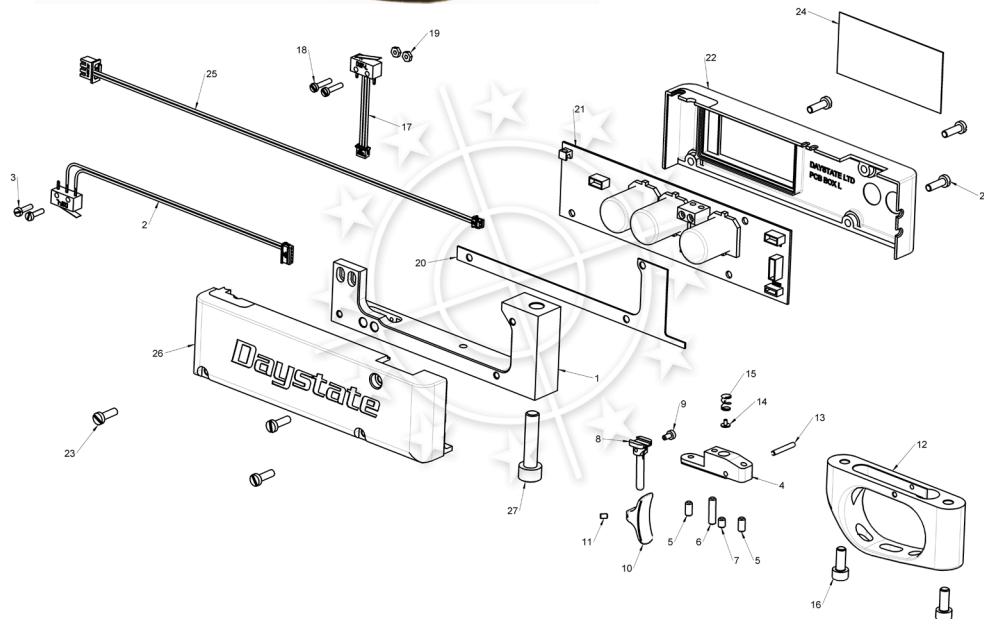
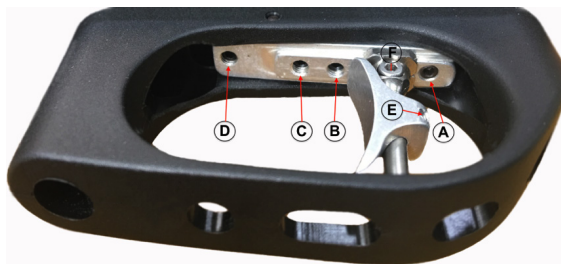
Screw C: 1st Stage Weight Screw
Adjust clockwise to make heavier

Screw D: 1st Stage Travel Screw -
Adjust clockwise to Decrease trigger travel

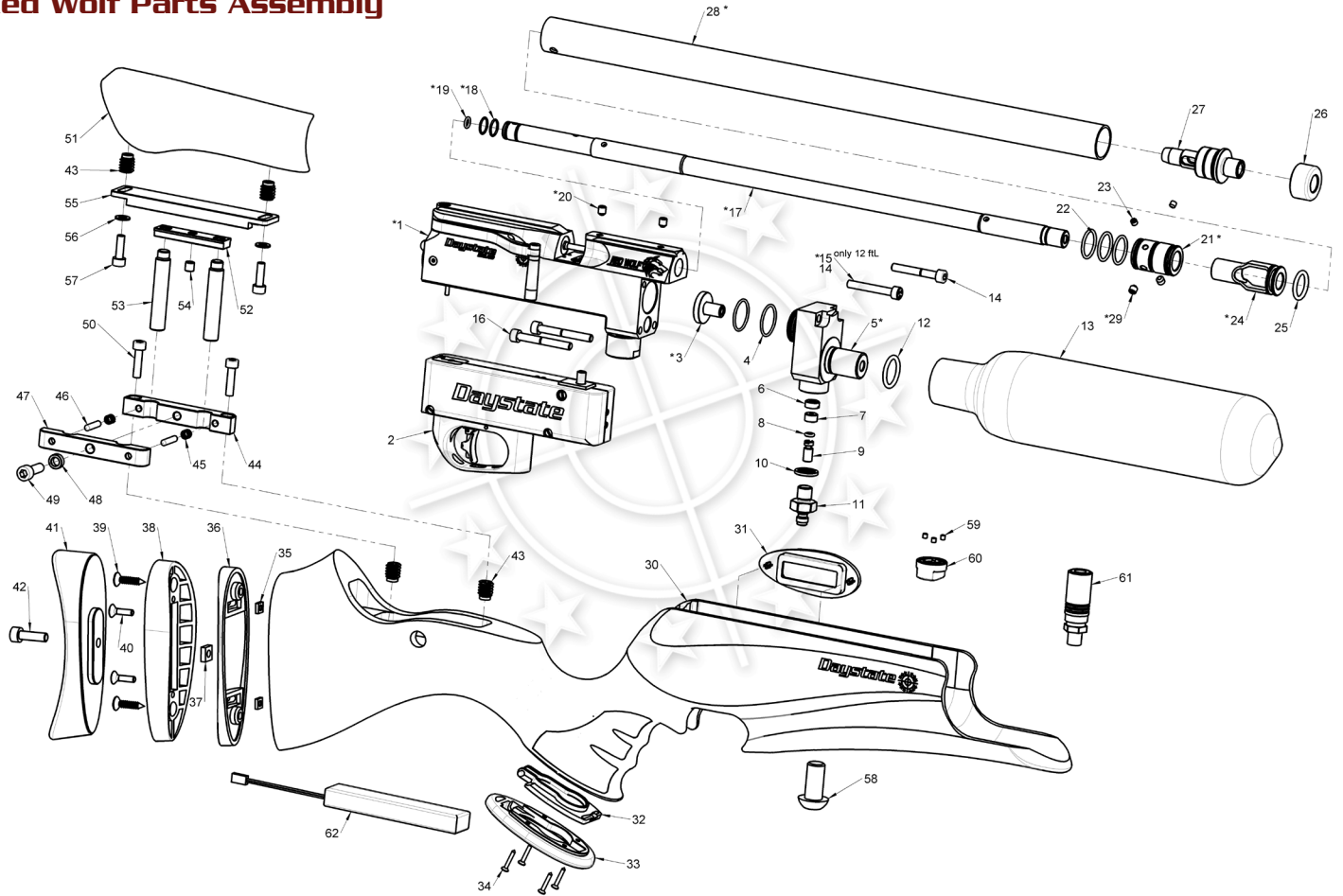
Screw E: Trigger Blade Adjustment Screw
Loosen to adjust trigger blade to desired position **

Screw F: Trigger Shoe Adjustment Screw
Loosen to adjust shoe to desired position

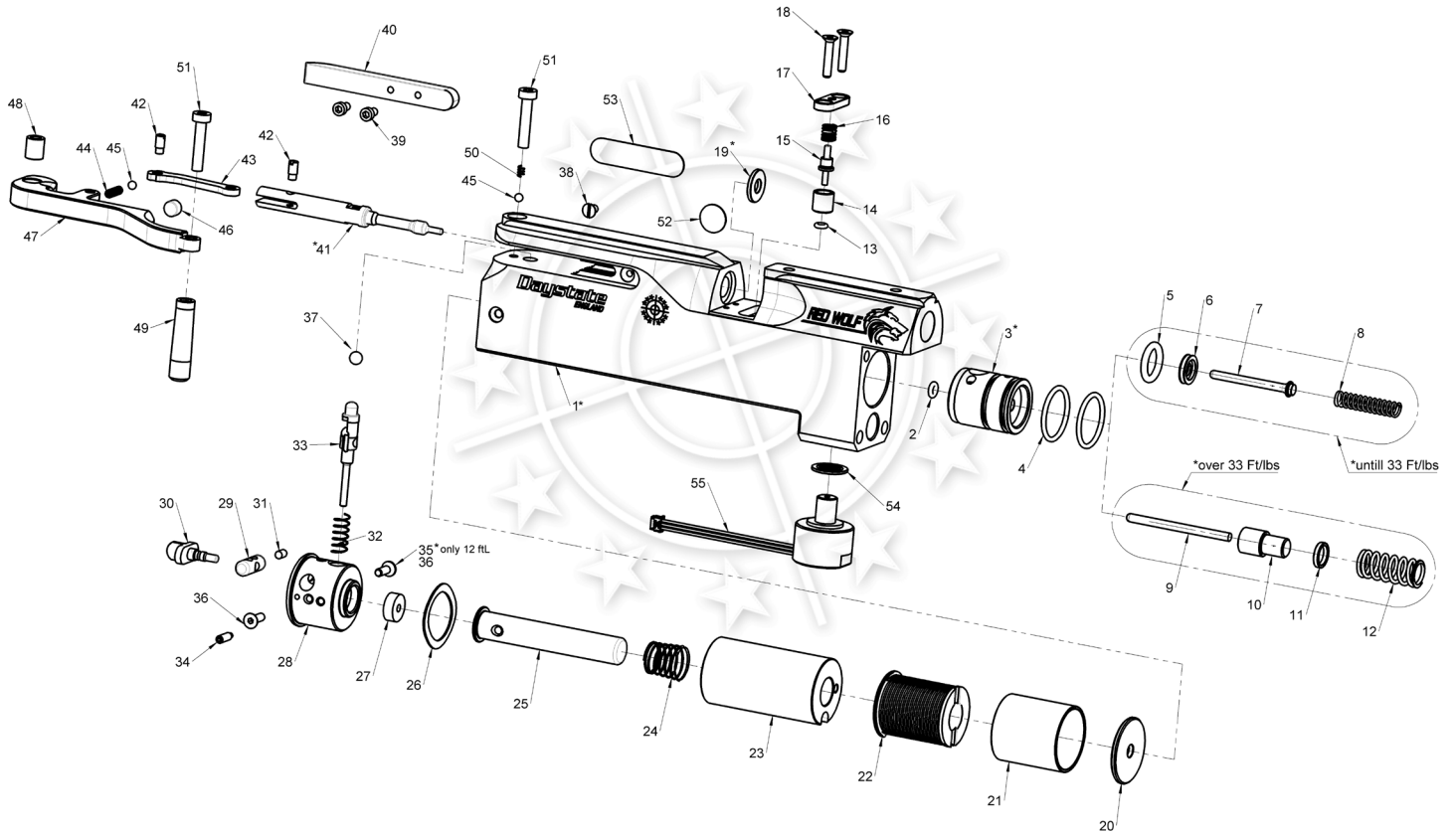
**Models fitted with Match Trigger Blade use 0.9 mm hex tool for adjustment of trigger blade.



Red Wolf Parts Assembly



Red Wolf Breech Assembly



3 YEAR WARRANTY

All new Daystate rifles are guaranteed against faulty parts and labour for a period of three years from date of purchase (proof of purchase required). After this period, it is recommended that the rifle be returned to Daystate or its authorised agent for a scheduled service, and every three years subsequently. Servicing is charged at current rates. The warranty applies to the first purchase of a new rifle and is not transferable.

EXCLUDED FROM WARRANTY

Failure due to misuse or abuse, the fitting of non-standard parts, springs, seals, water-damage to wooden stocks, batteries and fair wear and tear. Daystate Ltd or its approved agent must carry out all maintenance and warranty work. The rifle must be maintained and used as outlined in this Instruction Manual.

Should a rifle be returned or collected under warranty, Daystate or its approved agent reserve the right to charge for postage and inspection costs.

A return form, which should be included with the rifle, can be downloaded here: www.daystate.com/images/reviews/RifleReturnForm.pdf

Ensure that the rifle is securely packed. Where possible, please remove stock, scope and other accessories to avoid the possibility of transit damage.

While every effort is taken to ensure the accuracy of the information in this instruction manual, Daystate Ltd or its agents cannot be held responsible for errors or omissions. Products are continually updated and specification may change without notice.

View the online handbook at: www.daystate.com/support for the latest information.



DAYSTATE LTD.
UNIT 3, RALEIGH HALL INDUSTRIAL ESTATE,
ECCLESHALL, STAFFORDSHIRE ST21 6JL.

© Daystate Ltd. 2018.v2. E&OE.