



Daystate 

ALPHA WOLF & DELTA WOLF



OFFICIAL HANDBOOK

SAFETY FIRST!

- ✘ **Never point your air rifle at anyone, nor at anything other than a legitimate target**
- ✘ **Never leave your air rifle unattended**
- ✘ **Never leave a pellet in the breech when storing your air rifle; remove the magazine when not shooting**
- ✔ Always check your air rifle is not loaded when you first pick it up
- ✔ Always treat your air rifle as if it were loaded, even if you know it is not
- ✔ Always use a safe, large backstop to catch your pellets - and pay due attention to what is behind the target should you miss
- ✔ Always store your air rifle and pellets separately and securely so that no unauthorised person can access or use them
- ✔ Always apply the safety catch when reloading, moving or whenever the rifle is inactive

Know and abide by the air rifle laws applicable in your state or country



Store your rifle securely when not in use

CONTENTS

SAFETY	2
GENERAL INFORMATION	4
FILLING YOUR AIR RIFLE WITH COMPRESSED AIR	5
LOADING THE RIFLE	8
FITTING A RIFLE SCOPE	10
ZEROING THE RIFLE	12
PELLET RECOMMENDATIONS	12
BATTERY AND CHARGING	14
PROGRAMMING 12FTLB	16
Power Settings	17
User Settings	17
DTD Interface	18
PROGRAMMING FAC AND HP MODELS	19
Power Settings	19
User Settings	20
DTD Interface	23
OTHER SETTINGS	22
BARREL AND CALIBER CHANGE	23
REMOVING THE STOCK	25
ADJUSTMENTS	27
RECOMMENDED MAINTENANCE	32
ACCESSORIES	37
WARRANTY	38



INTRODUCTION

Congratulations on choosing the Daystate Delta Wolf or Alpha Wolf air rifle which feature an electronic, programmable action incorporating a touchscreen display making this the most advance airgun in the world today.

Your rifle has been hand-assembled using the finest materials available, from parts precision-made using CNC engineering technology. This rifle is the culmination of the company's involvement with precharged pneumatic (PCP) air rifles and uses knowledge gained from manufacturing this type of air rifle for over 40 years, and electronic controlled airguns for 20 years, making your new Daystate one of the most accurate and reliable rifles available today. Use this handbook to help you get the very best from it.

This handbook is being constantly updated. For the latest information, bookmark this page **here**.

For further reading and to get involved with Daystate active online support teams, Daystate Owners can now post across many groups:-

@daystateltd

Daystate Target and Shooting Group

Daystate Owners Group

Daystate Official Owners Club Group

Alpha & Delta Wolf Owners Group

**Daystate MK3/MK4 Owners Club
(No Selling Of Guns Permitted)**

We can also be contacted directly at **office@daystate.com**.
Please allow at least 24 hours for a response.



ELECTRONIC ACTION

The Delta Wolf and Alpha Wolf incorporate an electronic action, powered by a rechargeable 11.1v Lithium Polymer (LiPo) battery housed in the butt of the rifle

For the rifle to shoot, it must be charged with air (see opposite) and switched ON. The battery must also be sufficiently charged (see page 14).

SWITCHING ON

To switch on the Alpha Wolf or Delta Wolf at any time, cycle the safety catch.

If the rifle is already ON and it is just the screen back light that is dimmed, (see page 22), touch the information screen to reilluminate it.

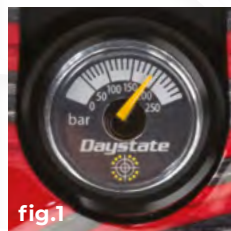
BATTERY CHARGING

The rechargeable LiPo battery should provide enough power per charge for many hundreds if not thousands of shots. The time the rifle is left ON reduces battery run time considerably. Regardless of use, the battery should be topped up every three months.

FILLING YOUR AIR RIFLE WITH COMPRESSED AIR

Important: DO NOT USE any gas other than clean, dry compressed AIR

Fill your Alpha Wolf/Delta Wolf with compressed air up to 240 BAR pressure from a separate charging unit – either a scuba tank or manual pump – using an air line (hose) connected



with the supplied charging connector. The pressure state of air in the buddy-bottle is shown by the gauges on the left side of the rifle, forward of the trigger (fig.1).

The needle on the analogue gauge will move gradually after each shot to indicate the reducing air pressure in the

buddy-bottle air reservoir. You should monitor the position of this gauge to know when to refill your rifle. A Low Pressure warning will also be shown on the touchscreen display.

FILLING PROCEDURE

1. Screw on the supplied snap-on female charging connector to your hose assembly
2. For the Delta Wolf - Remove the magnetic dust cap from underneath the trigger guard to expose the rifle's male air inlet valve (fig.2a and fig.2b). The Alpha Wolf inlet valve is visible (as shown fig.3). Firmly attach the snap-on connector to the inlet valve. Ensure the connector's outer sleeve has locked and that the connection is secure (fig.4, fig.5)
3. Close the bleed screw on your charging unit



fig.2a Delta Wolf



fig.2b Delta Wolf



fig.3 Alpha Wolf



fig.4 Delta Wolf



fig.5 Alpha Wolf

4. Slowly open the charging unit's main valve (if using a scuba tank/air bottle), or begin pumping (if using a manual pump), to allow air to transfer into the rifle's main buddy-bottle air reservoir

5. Noting the gauge on your charging assembly, fill the rifle to its maximum pressure of 240 BAR
6. Once the required pressure has been reached, turn off the charging unit's main valve (if applicable) and undo the bleed valve to rapidly bleed off the remaining air in the connector hose
7. Remove the snap-on connector from the rifle

Note: The bottle contains its own valve, making it possible to buy spare bottles, or to remove the main air source for maintenance or transportation.

IMPORTANT

- **USE ONLY** dry, clean compressed air of breathing quality
- **DO NOT USE** any other gas
- **DO NOT MODIFY** any part of the filling assembly
- **DO NOT SPRAY ANY LUBRICATION INTO** any internal parts of the filling assembly



DELTA
WOLF



LOADING THE MULTI-SHOT MAGAZINE

Always remember to keep the muzzle of the air rifle pointing in a safe direction

- Apply the safety catch
- Pull the side-lever all the way back
- Slide the magazine out of the breech (if deployed)
- Open the front loading gate on the magazine and fully rotate the inner drum one rotation clockwise (fig.6)



- While holding the drum against spring tension, insert a pellet into the lower magazine chamber (fig.7). The magazine drum can now be released



- Insert pellets into the remaining chambers (fig.8). Close the magazine loading gate



- Insert the loaded magazine into the breech of the rifle
- Push the side-lever forward

THE RIFLE IS NOW LOADED

- Disengage the safety catch and the rifle is ready to fire
- After the shot is taken, recycling the side-lever will cock the rifle and allow the magazine to automatically index. The next pellet will be chambered on the lever's return

Note: The magazine will index each time the side-lever is cycled. To avoid a double-load do not recycle the side-lever without having first fired the rifle.

The rifle can be dry fired that is fired with no pellets in the breech, without any mechanical damage occurring provided there is air in the rifle.

IMPORTANT:

- **Always keep the muzzle of your air rifle pointing in a safe direction**
- **Always ensure the last shot has been fired from the barrel before finishing the shooting session, and then remove the magazine**

MAGAZINE ORIENTATION

A single magazine can be inserted from either the left or right side of the breech. Alternatively, you can load two magazines, one from each side. As one magazine is depleted, open the breech bolt and slide the full magazine across to continue firing (fig.9).





FITTING A RIFLE SCOPE

ATTACHING THE MOUNTS

Daystate recommends the use of 20mm (Picatinny) Blueprint Mounts. Note that the rifle's optic rail is adjustable to obtain the correct eye relief, and the rail is directional with a .3° forward slant to assist scope to barrel alignment. The Alpha Wolf is further equipped with a bubble level to help avoid scope cant.

Loosely fix both mounts to the Picatinny rail

ALIGNING THE CROSSHAIR

To perfectly align the sight, you will need either a vice or Workmate placed on a firm and level surface to hold the air rifle.

- Clamp the rifle, making sure not to damage the stock
- Place a spirit level across the flat part of the breech block and adjust the air rifle until it is level
- Look through the sight and, without moving the air rifle, rotate the scope until the vertical crosshair aligns with a vertical object or plumb line. Tighten all scope mount screws and double-check vertical alignment.



Daystate recommend MTC Optics for your Alpha Wolf or Delta Wolf rifle.



Daystate
ENGLAND

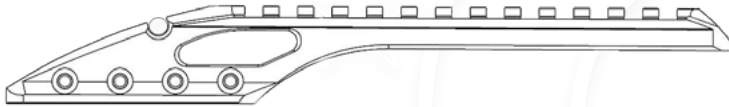
FIRE

SAFE

MTC

ZEROING THE RIFLE

- Set up a large paper target, with a safe and suitable backstop at around 10 metres
- Fire a test shot and note its position
- Using the elevation and windage turrets on the scope, adjust until the centre of the crosshair and the pellets' point of impact coincide
- Now move the target to your chosen primary shooting distance (zero range) and fine-tune the scope's zero in the same manner.



PELLET RECOMMENDATIONS

The power, accuracy and consistency of your Alpha Wolf or Delta Wolf relies on the quality of the pellets and slugs used. The algorithms used in the Alpha Wolf or Delta Wolf programming have been achieved using Rangemaster ammunition. More details on Rangemaster pellets can be found [here](#).

Daystate recommends the following:-

Up to 12 foot-pounds energy

- Rangemaster Sovereign* .177 (8.44gr) .22 (15.9gr)
- Rangemaster Sovereign Hunter .177 (10.3gr) .22 (18.3gr)
- Rangemaster Kaiser .177 (8.64gr) .22 (14.66gr)

Up to 30 foot-pounds energy

- Rangemaster Sovereign Hunter .177 (10.3gr) .22 (18.3gr)
- Rangemaster King .177 (13.42gr) .22 (25.38gr)

Up to 40 foot-pounds energy

Rangemaster King .177 (13.42gr) .22 (25.38gr)

Over 40 foot-pounds energy

- Rangemaster Emperor Lite .30 (44.75gr)
- Rangemaster Emperor .177 (15.89gr) .22 (33.95gr) .25 (33.95gr) .30 (50.15gr).
- Rangemaster Juggernaut .22 (25.3gr) .25 (33.49gr)

*Set-up and legal test pellet for UK specification 12ftlb rifles



ALPHA
WOLF

Daystate

SHOOTER KING

BATTERY AND CHARGING

IMPORTANT: BATTERY IS SHIPPED WITH APPROX 50% CHARGE AND SHOULD BE FULLY CHARGED BEFORE USE!



Your rifle contains a removable three cell Li-Po battery positioned in the rear of the rifle behind the butt plate. The battery is intended to be charged in position using a USB type C cable connected to a 5 volt charger rated to 2 amps or more.

The charging time will vary depending on the state of discharge of the battery and the output of the charger. Expect between 2 and 8 hours. the battery indicator will continue to show charging as long as the battery is on charge. The battery charging socket is positioned forward of the display screen (fig.10).



fig.10

A USB (C) type charger and cable is supplied with the rifle (fig.10a) to charge your battery while still in the rifles butt. In addition, a separate battery charger is available as an accessory should you wish to charge the battery, or a spare, while removed from the rifle.



fig.10a

To remove the battery, first remove the butt plate by releasing the locking lever shown in fig.11. The battery can then be tilted forwards and unplugged from its socket. Take care not to damage the cable on removal.



fig.11

A battery indicator on the display screen shows the level of charge. Charging can be carried out at any time to top up the battery.

Note: A fully charged battery will provide enough power for many hundreds of shots. Changing out a flat battery for one fully charged may require a powered USB C cable to be inserted for a few seconds to reset the rifle.

AUTO POWER OFF (STANDBY)

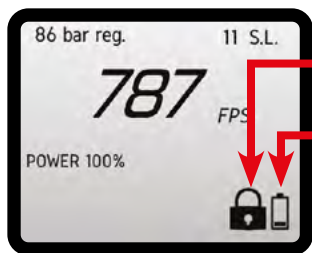
To extend battery run time it is recommended that the safety catch is used between shots. The display screen illumination is timed to dim down 30 seconds after it's activation and the firing system will go into AUTO POWER OFF (standby) to extend the battery run time. You can choose to shorten or extend the period before the firing system goes to standby from 30 seconds up to a maximum of 1 hour and 30 minutes. To adjust, put the air rifle into program mode and scroll through until you get to AUTO POWER OFF TIME SET.

Note: If the rifle goes into standby mode with the safety catch in the fire position, it will be necessary to reapply the safety catch and then again switch to fire to reactivate the rifle.



PROGRAMMING POWER SETTINGS

Alpha Wolf and Delta Wolf rifles can be updated to the latest program version either by buying the DTD adaptor **here** and downloading the update program **here** or by visiting a participating Daystate dealership. Currently all program updates for your rifle are free to download with the current version being version 1.3.3. Check with your dealer or agent for their charges for this service.



LIGHT/DAY MODE

When the display is locked a padlock will be displayed.

Battery indicator

HOME SCREEN LOCK/UNLOCK

Before putting the rifle into program mode, ensure it is unloaded and the safety catch is set to safe. The following procedures should always be carried out with the muzzle pointing in a safe direction.

Open the side-lever and pull back the trigger, maintaining pressure for three seconds. Release the trigger when the padlock icon disappears. The rifle can now be programmed

With the side-lever still open, side-swipe the screen to the left to scroll through the available modes

If at any time the side-lever is closed, or the safety set to FIRE, the lock will reapply, and the screen will return to the home screen.

UK 12 FOOT-POUNDS LAW

UK firearm's law allows for rifles which are not capable of a muzzle energy over 12 foot pounds to be unlicensed. For this reason, sub 12 ftlb rifles have a separate program, however Daystate has engineered the Alpha Wolf and Delta Wolf rifles to be fine tuneable by the shooter while safeguarding that the rifle cannot go over the factory-set 12 ftlb limit.

UK Test Pellet

The following pellets are used at our factory to achieve a UK legal power setting:

.177 Rangemaster Sovereign 8.44gr. We recommend a maximum velocity of 790fps

.22 Rangemaster Sovereign 15.9gr. We recommend a maximum velocity of 576fps

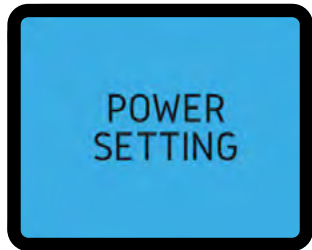
To use a different pellet, you must ensure your Alpha Wolf or Delta Wolf does not exceed 12 foot-pounds of energy. To do this:

- Use the Alpha Wolf or Delta Wolf's chronograph setting to determine the velocity of your chosen pellet
- Use a ballistic calculating app or the formula:
$$\text{Energy} = \text{Pellet weight in Grains} \times \text{Velocity} \times \text{Velocity} / 450395$$
to calculate muzzle energy
- The Power Setting function can be used to adjust muzzle energy in % increments
- The user shot setting menu can be used to custom tune the rifle to individual requirements

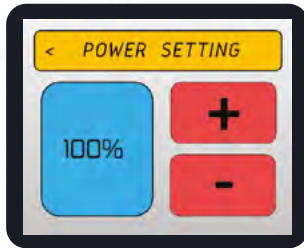
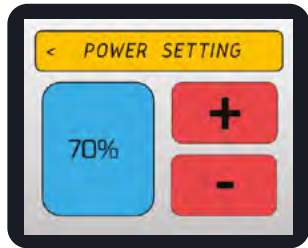
POWER SETTINGS MENU

Unlock the rifle

From home screen, swipe from right to left until you reach POWER SETTINGS menu



Press to enter POWER SETTING



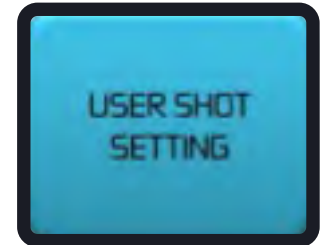
Press red buttons to increase and decrease power settings. Power will adjust between 70-100% in % increments. Choices are:

70, 75, 78, 80, 83, 85, 88, 90, 93, 95, 98, 100%

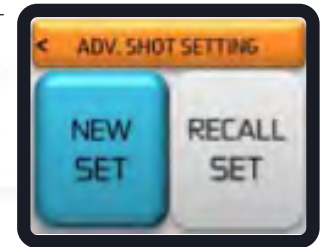
Once the desired setting is achieved, press the blue button to set.

Unlock the rifle

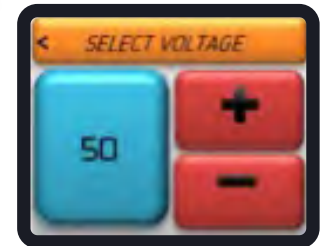
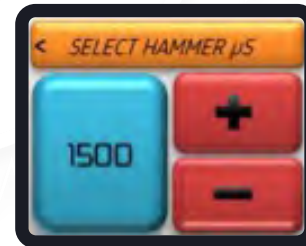
From home screen, swipe from right to left until you reach USER SHOT SETTING, then press



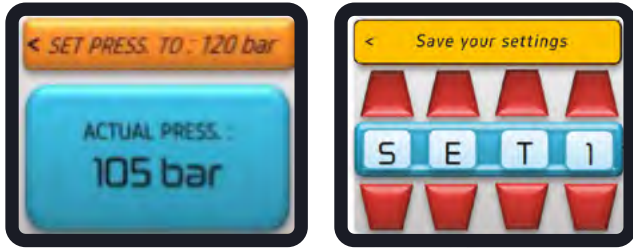
To create a new set press NEW SET



Using the red buttons, set the desired values, on Hammers pulse length then voltage press the blue button to confirm



The regulator pressure is shown next. On 12ftlb version this is not intended to be changed. Press the blue button. Next set a four character name for your new setting by using the red up and down buttons. Press the blue bar to set.



To activate, the shooter needs to select the new setting from the USER SHOT SETTING menu.

Go to and press USER SHOT SETTING.

Since you have created and stored a set, the recall set selection will now be active.

Press RECALL SET.

Side-swipe to find the name of the set you want to load and then press

The menu will return to the main screen, showing the selected set and all its values.



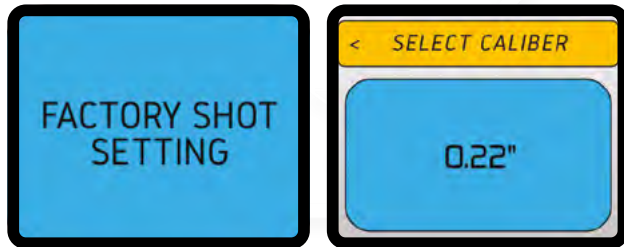
DTD Adaptor 12ftlb

A DTD adaptor can be used to connect the rifle to a windows-based laptop or PC. Full instructions on the interface and programming can be found **here**

PROGRAMMING FAC AND HP MODELS

The factory shot setting shows default settings as the rifle left the factory and allows the shooter to adjust the muzzle velocity by swiping right from an unlocked home screen. to adjust for changes to caliber, barrel length, pellet weight as well as velocity, press to enter full setup.

Unlock the rifle and swipe right to left



Press to change to caliber screen

The set calibre will display, swipe right to change... press to select

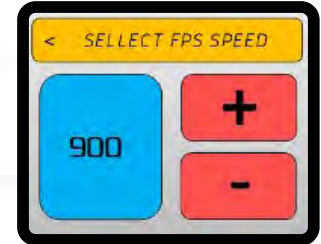


Select barrel, swipe right to change between 17" and 23"... press to select

Select barrel, swipe right to change NOTE: pellet weights being offered will vary according to caliber selected... press to select



Select speed in Feet Per Second (FPS) the rifle will only display the achievable pellet speed. Scroll up and down with red buttons, press the blue button to select



The rifle will now display in the yellow bar the correct and recommended regulator pressure. If the regulator is within ± 5 BAR of correct, it will show BLUE press to select





If the regulator is outside ± 5 BAR of correct, it will show RED press to select.



Regulator pressure can be adjusted to the correct pressure for the chosen velocity by adjusting the regulator adjustment that is placed between the barrel and the bottle (fig.12)

See regulator adjustment on page 27

In addition to the user program options, there is a **LOW PRESSURE** warning that automatically applies where relevant. warning that the rifle's air cylinder will need to be refilled.

The pressure at which the warning will show is dependent on the power and regulator settings

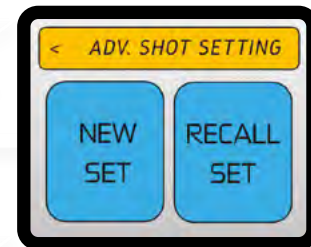
ADVANCED SHOT SETTING | EXPORT OR UK FAC

The rifle features Advanced Velocity Technology (AVT) that in addition to Factory Settings, contains other advance setting that provide:

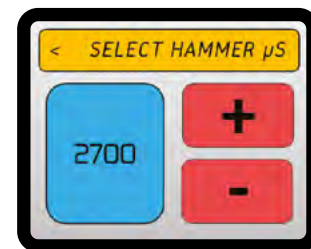
- Fine tune hammer-dwell by microseconds (μ s)
- Change voltage to adjust power
- Storing own pre-set data for use with different ammunition weights and calibers

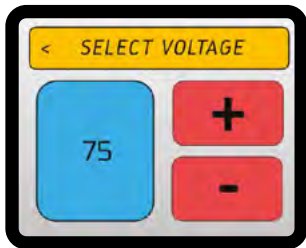
Press **NEW SET** to create your own user profile

Press **RECALL SET** to reload a profile you have previously created



Change hammer stroke $+/-$ to change value (a minimum / maximum limit is preset)



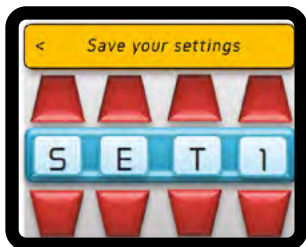


Select voltage + / - to change value (a minimum / maximum limit is preset)



Adjusts the pressure regulator and displays the value in real time when pressure is set, push to enter and go to the next setting. If the regulator is outside ± 5 BAR of correct, it will show RED press to select.

Regulator pressure can be adjusted to the correct pressure for the chosen velocity by adjusting the regulator adjustment that is placed between the barrel and the bottle. See regulator adjustment on page 27



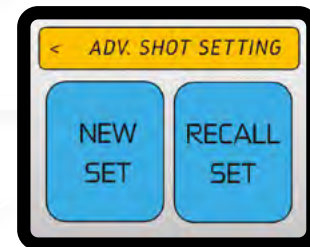
Scroll tabs to set profile name. Press the blue center bar to store

When the gun has just been set, or turned on after being in standby, but no shots have been fired yet, the feet per second (FPS) will not show



RECALL A SETTING PREVIOUSLY SAVED | EXPORT OR UK FAC

Press RECALL SET



Sideswipe to select setting press to select



OTHER SETTINGS



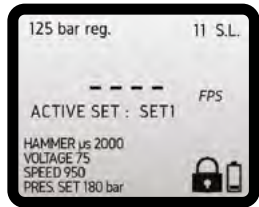
MAGAZINE SHOT COUNT

If the user selects NO, the screen will return to the home page and the shot count will not be displayed. If the user selects YES, the screen will go to the next page so you can select the magazine capacity



Side swipe the screen select the magazine shot capacity for the calibre you are using
Values available are: 7, 10, 11, 13, 14, 20, 22 and 26

When set to the desired number, push the blue button and the screen will return to the home page showing the shot count



On firing, the screen will count down remaining shots. At zero (0), the screen will start to flash and there will be a buzz and pipping noise



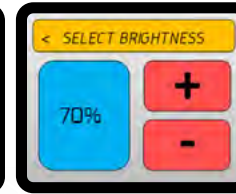
NIGHT MODE

To set NIGHT MODE, press the ON button. You will return to the home screen and you will be in NIGHT MODE. To return to DAY MODE repeat the above process

BACKLIGHT SETTINGS

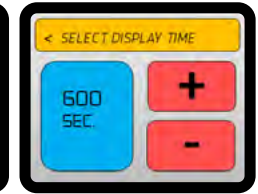


Press to select



+ / - to change brightens between 20-100%

Press Blue button to select



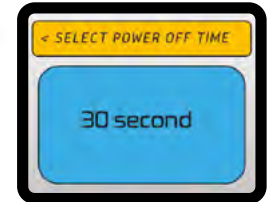
+ / - to change display time between 0-600 seconds

Press Blue button to select

AUTO POWER-OFF (STANDBY) TIME

Press to select. Side swipe to enter.

Choices are:
30 secs, 1 min (default), 1 mins 30 secs, 2 mins, 5 mins, 10 mins, 30 mins, 1 hour, 1 hour 30 mins



CHRONO ON/OFF

The chrono (chronograph) is set to ON as a default. To switch the chrono OFF, press the blue button which will return you to the home page. If CHRONO is OFF, CHRONO OFF will be displayed on the home page instead of FPS

If the chronograph module is disconnected or faulty, the button colour will change to grey and will not be selectable



DTD ADAPTOR

A data transfer device (DTD) is available to connect your rifle to a laptop or PC running a windows based system. The DTD can be purchased from your local Daystate retailer or online [here](#). Full and comprehensive DTD software guide can be viewed [here](#)



BARREL REMOVAL & CALIBER CHANGE



fig.13



fig.14

The rifle can be switched between calibers. To remove the barrel, loosen 3mm screw 'A' and without twisting, gently slide the barrel assembly forward (fig.13). Reassembly is the reverse of this procedure. Ensure the three electrical pins centrally line up with the barrel and breech assemblies.

The breech bolt is also caliber specific. To change the breech bolt, open the breech bolt and remove the 2mm Allen screw 'A' (fig.14).

Remove the butt pad and tilt the battery forward to access the 3mm breech bolt plug (fig.15). Unscrew and remove bolt 'B' and withdraw the breech bolt assembly out the rear of the block. Reassembly is the reverse of this procedure.



fig.15



ALPHA WOLF STOCK REMOVAL



Remove two short screws in front of the trigger (fig.16)



Remove the long stock bolt through the hand grip (fig 17). Carefully ease the stock off the action



Take care not to lose the safety spring and safety dowel located in the grip area of the stock (fig.18)

Reverse the procedure to replace the stock, ensure the safety spring and dowel are in place, ease the stock on by hand only replacing the securing screws when the stock is completely seated. Take care not to damage the rear of the stock as it aligns with the rear body

For Delta Wolf to Alpha Wolf conversions see [here](#) or view the video [here](#)

CAUTION: with the stock removed, care must be taken not to put side-pressure on the exposed safety levers



Daystate

3.5M
PRO

DELTA WOLF

DM 2376
DELTA WOLF

Daystate

World's Best MG

S&W

BARCELONA

WELLS & LEWIS - BOKN
Product 11/10/05 04/10/12
CE 1216 100 11/10/12 12
Produced in the UK
100% CO₂ CARTRIDGE
12.16 BAR (175 PSI)
100% CO₂ CARTRIDGE
100% CO₂ CARTRIDGE
100% CO₂ CARTRIDGE
100% CO₂ CARTRIDGE
100% CO₂ CARTRIDGE

ADJUSTMENTS

REGULATOR

The advanced Huma-Air regulator is set at the correct charging pressure for the power and caliber initially supplied. In normal use it should not be necessary to adjust regulator pressure. Changing caliber or large velocity changes on higher power (FAC) rifles may require a change in regulator pressure.

To increase regulator pressure, turn adjuster 'A' (fig.19) in an anti-clockwise direction, the pressure indicated on the display screen will increase. To lower regulator pressure, turn the adjusting screw clockwise. When lowering pressure, it is important that the air is removed from the rifle to avoid damaging the regulator.

To remove the air from the rifle, remove the air bottle by unscrewing it anti-clockwise (fig.20) and dry fire the rifle until the secondary chamber is empty (the rifle stops expelling air). Do not have the barrel removed when dry firing.

Refitting the bottle and filling it with air will also fill the secondary chamber with air. View a video [here](#)



SIGHT MOUNT

The telescopic sight rail is a picatinny type made to STANAG 4694 dimensions. It can be moved forwards and backwards to cater for a variety of telescopic sight lengths by slackening the 5mm locking screws (fig.21). Both the two ended Delta Wolf and single ended Alpha Wolf rails feature a .3 degree downward angle to assist scope alignment.

The rail fitted to Alpha Wolf additionally features a bubble level to help to avoid scope canting.



CHEEKPIECE

The lateral and fore/aft positions of the cheekpiece can also be adjusted or switched from the left-to the right-hand side by loosening/re-tightening the 2mm bolts (fig.21).



fig.21

Delta Wolf

Note that the Alpha Wolf contains a riser block to assist correct scope alignment which is changed by the use of a stock. A PRS accessory can be purchased [here](#) which will add a further degree of adjustment



BUTT-PAD

The butt-pad can be lowered and raised as required by unscrewing the centre 3 mm bolt and re-tightening it when the butt-pad is in the desired position (fig.22). A PRS accessory can be purchased [here](#) which will add a further degree of adjustment



fig.22

BIPOD

A bipod can be fitted to the picatinny forend accessory rail on your rifle (fig.23). A recommended bipod can be viewed [here](#).

An extended PRS accessory rail can also be added and can be viewed [here](#).

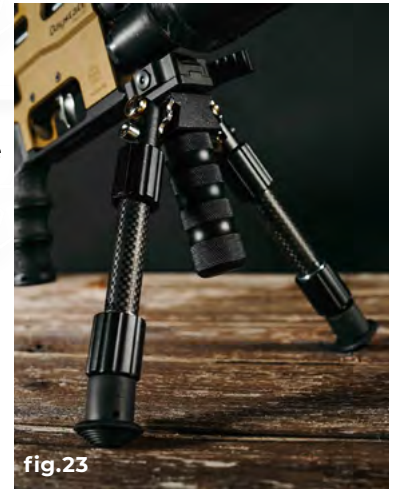


fig.23

SIDE-LEVER

The rifle is fully ambidextrous. The side lever and magazine can be reversed to suit the shooter's needs.

With a 3mm Allen key, unscrew and remove the two screws above the cocking lever (fig.24).

Pivot the side-lever forward and using the same Allen key to the rear of the now exposed opening, push and slide the blanking plate out of the rear of the breech block (fig.25)

From the blanking plate side, use a screwdriver to remove the silver slotted screw (fig.26)



Re-insert the side-lever assembly on the opposite side (fig.27)

Using a 3mm Allen key, relocate the side-lever's handle to the underside of the lever (fig.28)

Refit the blanking plate

Replace and re-tighten the pivot and blanking plate bolts. Take care not to overtighten



TRIGGER

Allen key sizes: 1.5mm throughout with .9mm for trigger shoe adjustment.

Ensure the air rifle's safety switch is in the SAFE position and the air rifle is unloaded.

Screw A Second stage contact screw factory set (DO NOT ADJUST)

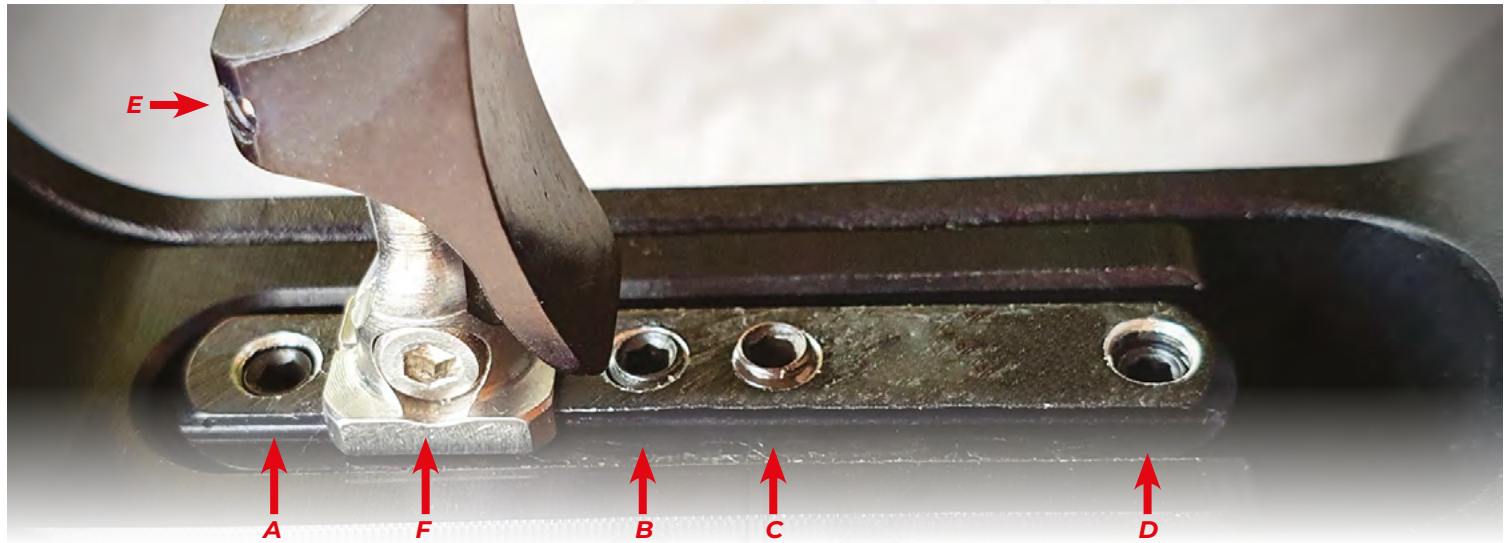
Screw B Second stage weight screw. Adjust clockwise to make heavier

Screw C First stage weight screw. Adjust clockwise to make heavier

Screw D First stage travel screw. Adjust clockwise to decrease trigger travel

Screw E Trigger blade reach adjustment screw. Loosen to move trigger blade to desired position

Screw F Trigger shoe adjustment screw. Loosen to adjust shoe to desired position



RECOMMENDED MAINTENANCE

HELP AND ADVICE

Daystate's you tube site contains an ever expanding portfolio of support videos, which can be viewed [here](#)

SERVICING

Your rifle works at extremely high pressures and can be dangerous if not serviced correctly. All work should be carried out by a Daystate factory-trained gunsmith. Correct maintenance will ensure a long, trouble-free life. Daystate recommends that the rifle be returned to the factory, or your Daystate-approved servicing agent, for routine maintenance every three years.

CHRONO CLEANING

The chronograph unit fitted to your Alpha Wolf contains a clear plastic tube that should be internally cleaned at least every 500 shots to avoid missed readings caused by lead



fig.29

dust. Use a pistol cleaning rod with flannelette or a soft barrel mop, lightly soaked with a non-abrasive cleaner (fig.29). Internal diameter of the tube is 9mm. Avoid using pellet lubricant that can cause lead dust to stick to the inside of the chrono tube.

BARREL CLEANING

For optimum performance, the barrel should be periodically cleaned with a barrel cleaning solution recommended for air rifles. Daystate recommends the use of cleaning pellets or soft brush. A wire brush must not be used on the Alpha Wolf as it may damage the chronograph module. The barrel shroud and chronograph assembly is made as a unit and should not be stripped down. The barrel can be cleaned on or off the rifle, see barrel removal in the chapter

BARREL AND CALIBER CHANGE

Frequency of cleaning depends on the pellet type and the individual barrel. For general guidance, the barrel should be cleaned in line with the cleaning of the chrono tube: at least every 500 shots.

AIR RESERVOIR

The Alpha Wolf's buddy-bottle will withstand pressures many times the working pressure of the air rifle. The air buddy bottle should be inspected and replaced every 10 years.

ACTION

To keep the rifle clean, a suitable gun cleaner or oil can be applied to a cloth and used to wipe over the outside of the gun. **DO NOT** allow oil to enter into the inlet valve or electronics areas.

STOCK

A furniture polish is recommended for laminate and Safari textured finish stocks.

LUBRICATION

Periodically, the bolt shaft and sidelever pivots should be sparingly lubricated with light grease or oil. Do not lubricate any of the internal parts such as the firing valve or solenoid/hammer assembly. The snap-on filling connector is factory-lubricated with a special non-combustible grease. The connector can be maintained by wiping over with oil or grease but should be left dry.

USE OF MANUAL PUMPS

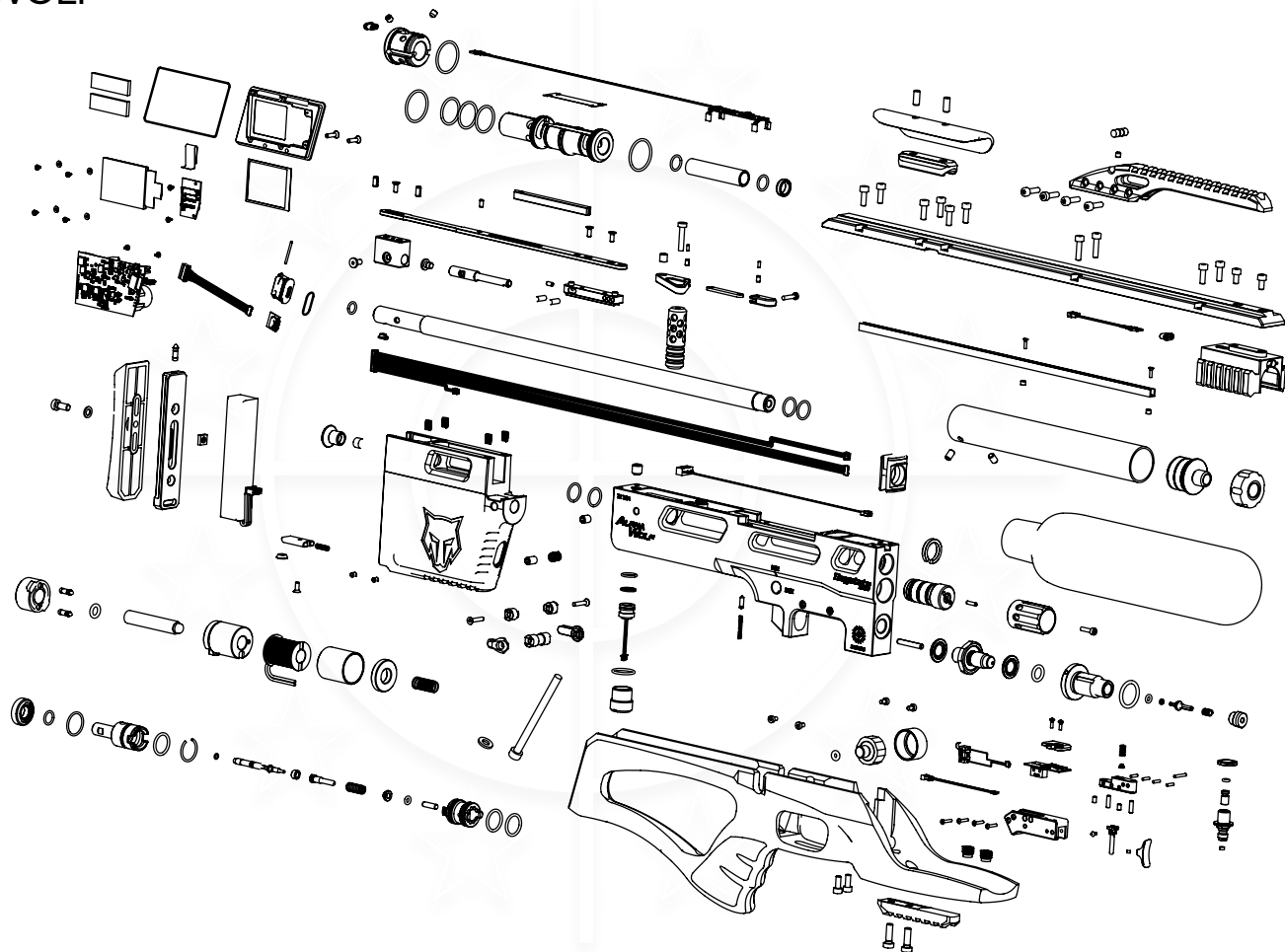
This type of charger offers an inexpensive and convenient method of charging your rifle. If you regularly use this type of charger, care should be taken that condensation build-up from inside the pump is not transferred to the rifle. Always refer to the pump manufacturer's operating instructions.

More information at the technical support centre [here](#)

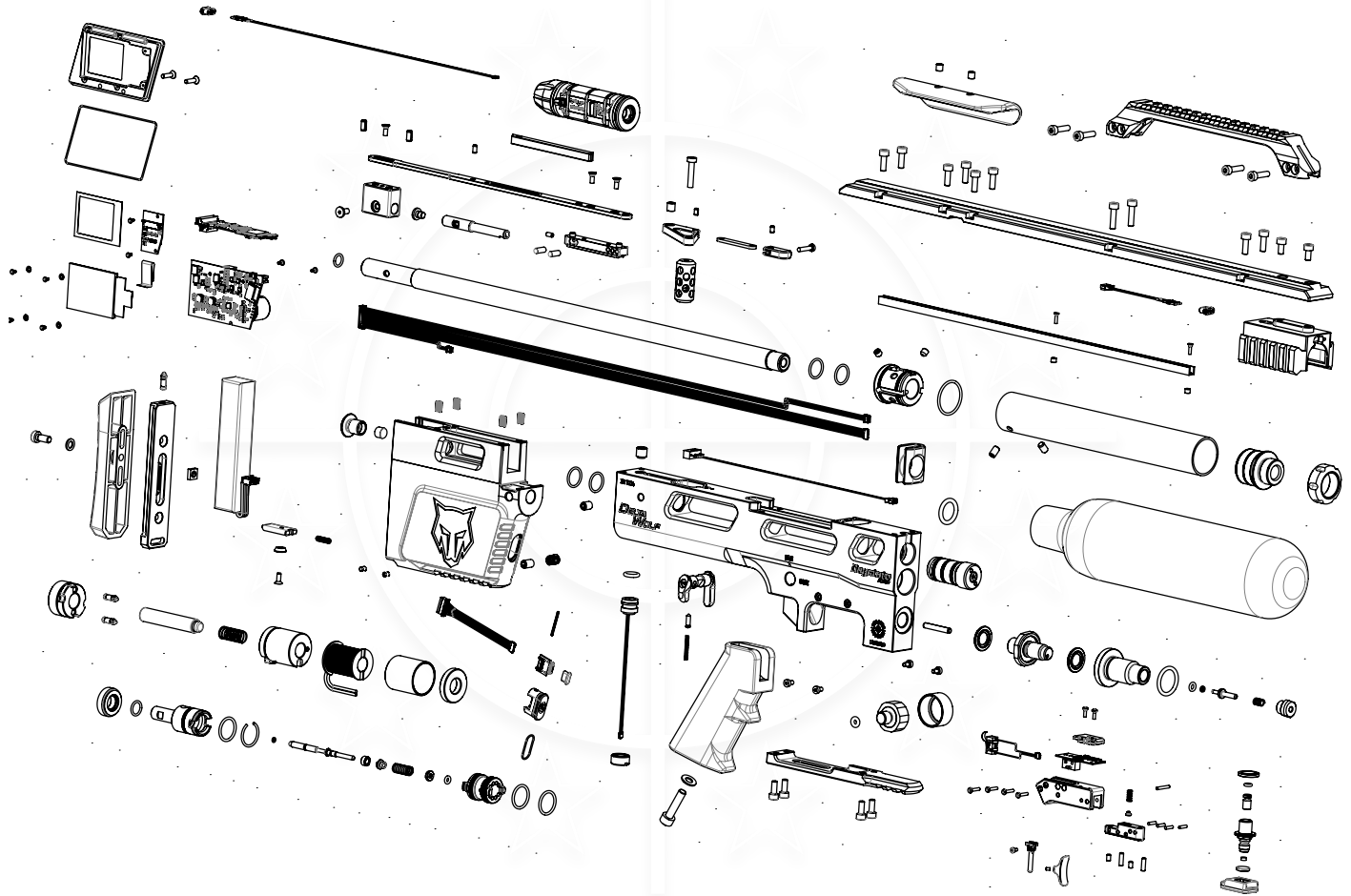




ALPHA WOLF



DELTA WOLF



ACCESSORIES

A full range of accessories for your rifle can be viewed [here](#)



WARRANTY

3 YEAR WARRANTY

All new Daystate rifles are guaranteed against faulty parts and labour for a period of three years from date of purchase (proof of purchase required). After this period, it is recommended that the rifle be returned to Daystate or its authorised agent for a scheduled service, and every three years subsequently. Servicing is charged at current rates. The warranty applies to the first purchase of a new rifle and is not transferable. Register your warranty [here](#)

EXCLUDED FROM WARRANTY

Failure due to misuse or abuse, the fitting of non-standard parts, springs, seals, water-damage, batteries and fair wear and tear. Daystate Ltd or its approved agent must carry out all maintenance and warranty work. The rifle must be maintained and used as outlined in this Instruction Manual.

Should a rifle be returned or collected under warranty, Daystate or its approved agent reserve the right to charge for postage and inspection costs.

A return form, which should be included with the rifle, can be downloaded [here](#)

Ensure that the rifle is securely packed. Where possible, please remove the scope and other accessories to avoid the possibility of transit damage.

While every effort is taken to ensure the accuracy of the information in this instruction manual, Daystate Ltd or its agents cannot be held responsible for errors or omissions. Products are continually updated, and specification may change without notice.

Daystate



DAYSTATE LTD.

Unit 3 | Raleigh Hall Industrial Estate | Eccleshall | Staffordshire | ST21 6JL | UK | office@daystate.com

daystate.com

©Daystate Ltd. 2022.v1. E&OE.